



Great Swamp Bonsai Society

Next meeting: **TUESDAY, June 9th 6:30 PM– dark**
DIFFERENT LOCATION

June 2020 Newsletter

JUNE MEETING ! Hosted at the home of Mark and Sheila Schmuck

My apologies for the lateness of this month's newsletter—what with the temporary shutting down of our regular meeting place, the cancellation of our Spring Open House, and the updating of our club Facebook page, the newsletter sort of got away from me.

On **Tuesday, June 9th**, from **6:00 PM till dark**, Mark and Sheila Schmuck will be hosting an **outdoor meeting** in the garden of their home in **Rockaway, NJ**. They will provide cold drinks and chips. The topic will be **“Show and Tell”**—feel free to bring along a tree or two that you'd like to display for comments, advice, assistance, or just to show off. This will be a great opportunity for newbies to get a little one-on-one help with that tree that has you puzzled.

You are welcome to bring a folding chair if you wish. We also ask that you come prepared with a face mask, as per current public health guidelines.

Please RSVP Mark and Sheila at lofty235@verizon.net, so they can know what to expect. Address and parking instructions will be provided via email.

Hope to see you there! Thanks again, Mark and Sheila!



GSBS YouTube Channel – GSBS Facebook Page

We have established a Great Swamp Bonsai Society **Youtube Channel**, which at the moment features only a few amateur video clips by yours truly (John Michalski), expounding or demonstrating simple maintenance techniques for different species used in bonsai. It shows promise as a venue for club members to share their knowledge, or their bonsai collection, with the membership. If you have something you'd like to upload, get in touch with me at huonia@aol.com. Thanks!

Our club **Facebook Page** is also up and running, and doing very nicely so far. If you haven't yet checked in, come and join the fun! This is a wonderful venue for anyone in the group to post photos, ask questions, or chime in with ideas and opinions about other people's work and accomplishments. To contribute to the discussion, all you have to do is go to the page and request to join the group—once your request has been accepted, you will be able to post photos, videos, and comments.

Great Swamp Bonsai Society

Private group

About
Discussion
Rooms
Members
Events
Videos
Photos
Files
Watch Party

Joined ▾ ✓ Notifications ➔ Share ⋮ More

January 2014
Founding Member · June 4 at 5:29 PM
The meeting was broken up into six groups, each with a nursery plant, and given two hours to perform an initial design and styling on it.

Seen by 5

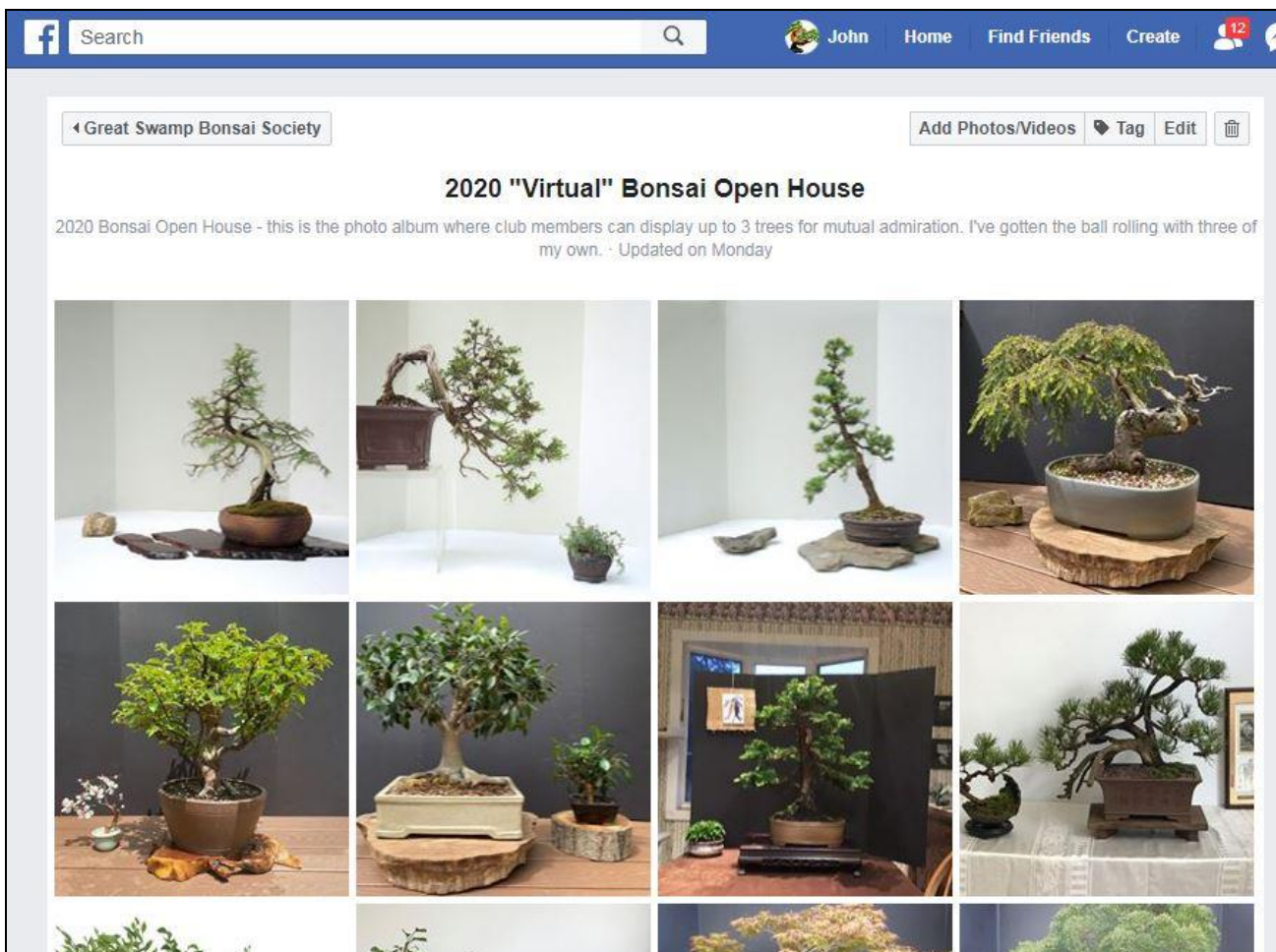
Mark Schmuck and 3 others

Seen by 26

Our “Virtual” Bonsai Open House

We have established a “photo album” inside the GSBS Facebook Page where members of the group can upload photos for our **2020 Virtual Open House**. We initially set a deadline of May 31st but are now extending the offer to any club member who wishes to share photos of up to 4 trees to just go ahead and upload them. The display so far is very impressive, and we’d like to see what you’ve been up to!

To join the fun, go to the **GSBS Facebook Page**, where you’ll see a heading for **“photos”** along the left-hand side of the page. Click on that, and you’ll see a set of photos in the center of your screen. Above the photos are headings for **Photos, Albums, and Videos**. Click on **“Albums,”** and you will see one with the title **“2020 ‘Virtual’ Bonsai Open House.”** Click on that and you will see all the photos that have been uploaded so far. In the upper-right corner of that field you will see a heading for **“Add Photos/Videos.”** Click on that and you’re ready to go. Please remember to add some descriptive information after you upload your photos—there’s a field for each photo, once you’ve uploaded it, in the upper right area for writing a little something.



Plant Care Tips for June

It's getting late to dig or repot hardy trees, though it can still be done if you know what you're doing or have a smart friend. Your feeding, pinching, and pruning schedules should be in full swing by now. Pinch the terminal buds from deciduous trees, leaving only one pair of leaves (for Amur Maples, let the shoots grow until they harden off first, before trimming back to first or second pair of leaves). Most of your candle-pinching for evergreens will be winding down at this point.

Everyone seems to have their own preferences for fertilizers and feeding schedules, so ask around or find a good book or website. In general we feed the trees "hard" in June and July, applying general or high-nitrogen fertilizer as directed by the manufacturer, mixed in the water, or sprayed on foliage, as you prefer. Some growers use pelleted fertilizer such as Osmocote with good results.

Keep an eye peeled for insect pests and don't overdo it with the chemicals! Always read and follow manufacturers' directions, and be aware that plants in small containers are more easily stressed than plants growing in the ground. If you spray your trees with insecticides or fungicides, it's best to put them into the shade for the rest of the day.

The weather has been less predictable in recent years, so keep your antennae up for cold nights and hot spells, and protect trees accordingly. [JM]

GSBS Sales Table – "Virtual" Sales Table

Whenever we eventually return to something like a normal schedule, we will continue with our recent addition of a "sales table" for any bonsai-related articles that club members wish to offer for sale at our regular meetings. You simply bring your wares and post the prices with them. In the meantime, feel free to post announcements on our club [Facebook Page](#) if you have something to sell, or something you are seeking. **(Non-commercial sales only, please. This is not intended as advertising space for full-time professionals.)** This is a good way for members to move along those items they no longer wish to keep, while offering same to other people who might cherish them! So please feel free!

Dues

While it does not appear that the club will be spending a lot of money any time soon, we will of course still accept dues from current club members, as well as those who wish to officially join our organization. Until we meet again, dues may be paid by check to **club treasurer Rick Myers**, mailed to his address on the last page of this newsletter. Annual membership remains at \$40 for individual, \$50 family, and helps support club activities such as hosting touring experts and purchasing supplies like soil and wire for group activities.

Save and Bring In Your Discarded Copper Bonsai Wire

Please remember to save and (eventually) bring in those wire clippings. **It helps if you cut your wire into short (3-6 inch) lengths, as it packs more easily for transport and sale.** About once a year we bring them to a scrap metal dealer and swap them for cash. It's usually about enough to equal one or two paid memberships, so it really does help keep the GSBS afloat.

Keep those Topic Suggestions Coming!

A reminder to feel free to send your ideas and topic suggestions to any of the Board Members listed at the back of this newsletter. GSBS is always looking for new and interesting topics that will appeal to the various educational needs of our diverse membership. The club exists for you, so don't be shy with your recommendations.

We especially welcome volunteers who wish to plan and lead presentations and workshops, so that the club may benefit from the wide array of experience contained within our membership.

Visit our webpage at <http://www.arboretumfriends.org/gsbonsai/>

Novices and non-members always welcome!

Come and plan to get your hands dirty!

Calendar of Events for 2020

Obviously, our calendar is currently up in the air. But keep those suggestions coming—we will be back on track sooner or later!

WATCH YOUR EMAIL FOR UPDATES.

June 9th (Tuesday): 6:00 PM till dark. “Show and Tell” outdoor meeting at the home and garden of Mark and Sheila Schmuck of Rockaway, NJ. **Please RSVP Mark at lofty235@verizon.net**, if you are planning to attend. Face masks, please.

??? July 14th (Tuesday, 6:30-9:30 PM). ***Venue and topic to be determined.***

??? August: *Annual Club Picnic. Date and location to be determined.*

GSBS Contact Information:

President: John Michalski
huonia@aol.com

Phone: 973-829-0094
223 Mt. Kemble Avenue
Morristown, NJ 07960

Past President: Diego E Pablos
neyamadoribonsai@gmail.com
Phone: 973.224.8139

Vice President: **Position Open**

Secretary: Mark Schmuck lofty235@verizon.net

Treasurer: Rick Myers spruce80@verizon.net
80 Kenvil Ave
Succasunna N J
07876

Newsletter: John Michalski huonia@aol.com

Club Information

Location:

The Frelinghuysen Arboretum
353 East Hanover Ave,
Morristown, NJ 07962

Date:

Usually the second Tuesday of each
Month, (check our website for
special dates and locations)

Time: 6:30 – 9:30 pm

**Remember to check our website
(<http://www.arboretumfriends.org/gsbonsai/index.htm>) for
special events, dates, updates
and latest information.**

Great Swamp Bonsai Society

c/o John Michalski
223 Mount Kemble Ave., Morristown, NJ 07960

Great Swamp Bonsai Society Membership Registration:

Send to:

GSBS c/o Rick Myers **New** **Renewal**
80 Kenvil Avenue
Succasunna, NJ 07876. **Individual (\$40.00)** **Family (\$50.00)**

Name(s): _____ **Email:** _____

Address: _____ **Phone:** (_____) _____

If Family Membership, please list other members:
