

G
R
E
A
T
S
W
A
M
P
B
O
N
S
A
I
S
O
C
I
E
T
Y

September Highlights:

On September 27th, we had the pleasure of having an afternoon workshop followed by an evening demo/lecture by renowned bonsai artist, Boon Manakitivipart, whom provided our members with a great deal of information as we worked on our trees and during the evening's demo tree, a collected Ponderosa pine, owned by Fred Aufshläger. The focus was on the general discussion of bonsai care as well as information needed for the health of the bonsai. Boon made a number of points, some of which were contrary to what has been the accepted practices for many of us. Here are some of Boon's points:

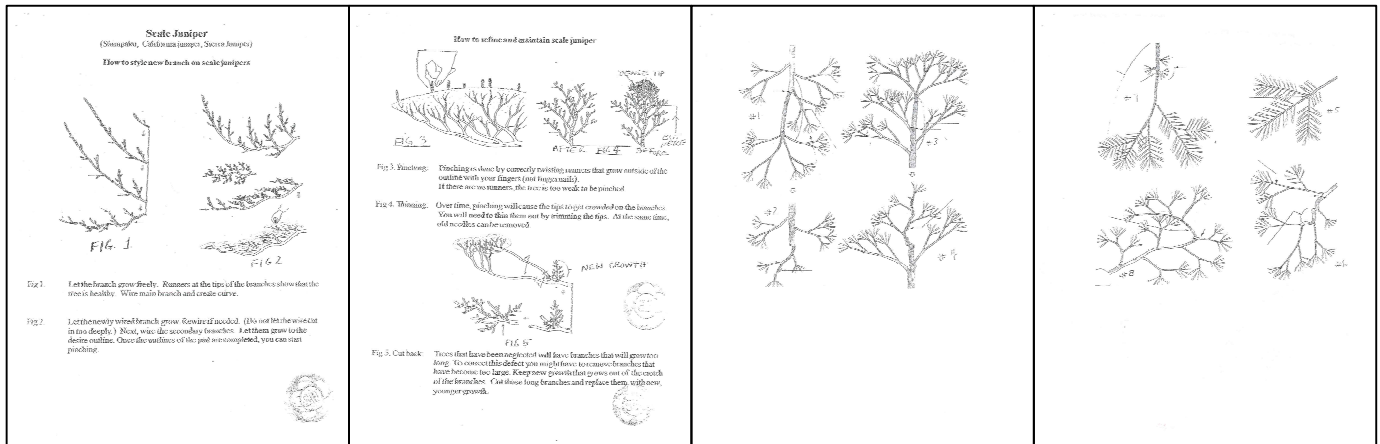
1. The health of the tree is the primary consideration before anything else. Recognize the health of the tree.
2. Get the tree strong first, then commence work.
3. Allow the tree to grow out, then cut/prune.
4. Don't cut back to "nothing" - leave some living material.
5. Death of a bonsai can be very slow, taking up to three years once decline begins.
6. Know where to cut to encourage new growth.
7. Balance the energy of the tree.
8. Cut the stronger part of the tree harder than the weakest part.
9. Know the consequences of plucking, pruning, and pinching.

On repotting:

1. Soil mixtures with organic material should be avoided, especially any form of bark.
2. Avoid soil mixtures with particles that are too small.
3. Charcoal may be added to growing medium.
4. A mixture of equal parts pumice, lava rock, and akadama is ideal. (Large sized perlite may be substituted for pumice.)

Boon's website:

<http://bonsaiboon.com>



October Highlights:

On our October meeting, Juan Calderon showed us the proper maintenance to follow for our pines. This includes the following species; Ponderosa Pine, Mugho Pine, Japanese White Pines, Scots Pine. This is a very important time to clean your pines from any old foliage and unwanted branches. Do not disturb the roots at this time. It is also a good time to wire your branches to start making some design decisions, only if the tree is strong and healthy, if not do not wire and wait until next year to do so.

Plant Care Tips for October

Tree growth is now drawing to a close, with leaves displaying a final array of color before winter. Watering can definitely be minimized at this time. Heavy branch pruning can be done on pines, and overwinter them in a cool greenhouse. Do not continue to fertilize, begin again in March.

It is hardening-off time for your trees, and by now you should have created a safe place to keep them for the cold months ahead. Certain types of trees are repotted or trained at this time of year... see the comments that follow. Most of you realize that the drought has not yet ended, and this continues to put stress on our plants, so preparing them for winter is more crucial this year than ever.

Feeding: As reported in last month's newsletter, many authors suggest a single Autumn feeding. Please note that fertilization must be handled with sensitivity, or else you risk pushing too much new growth that will not harden-off sufficiently before the cold weather sets in. Deciduous trees may benefit from a low-nitrogen (that is, higher in potassium and phosphorous) feeding after the leaves have fallen but prior to November 1; this can promote bud formation and strengthen the trunk and root system for winter. Similarly, evergreens may be fed a low-nitrogen fertilizer, until the end of October.

Repotting and Training: Japanese texts recommend autumn repotting for most evergreens, but they also cite early spring for each of these, considering the difference in climate, and the drought and all, I'd stick with early spring. Cherry and flowering quince are repotted by the Japanese in October. Many needled evergreens are most successfully wire-trained during the autumn months, but most sources say wait until late October or November.

Winter protection: By November you will need to have figured out how and where you will stash your hardy outdoor trees. Thanksgiving is commonly used as a start date for winter protection. If you have only a few trees, it may be possible to plant them directly into the ground, pot and all, and cover the plant with an upturned bushel basket. But for larger collections it may prove useful to build some sort of cold-frame or organize some space in an unheated shed or some-such. Beware of continuing, or surprise, warm weather, if you plan to shed or cold-frame your trees, since these enclosures can remain surprisingly warm, causing trees to pop new buds or refuse to harden off.

Tips Taken From *Growing & Displaying Bonsai* by Colin Lewis and Neil Sutherland and from *Bonsai, the Art of Growing and Keeping Miniature Trees* by Peter Chan

Contact Information:

Diego E Pablos bonsai4ever@aol.com
Phone: 973.224.8139
289 Mount Hope Ave.
K-12, Rockaway Twp.
Dover, NJ 07801

Michael Markoff MJSmart@aol.com
Phone: 973.895.6287

Fred Aufshläger fdauf@msn.com
Phone: 908.766.1359
17 Lakeview Drive
Bernardville, NJ 07924

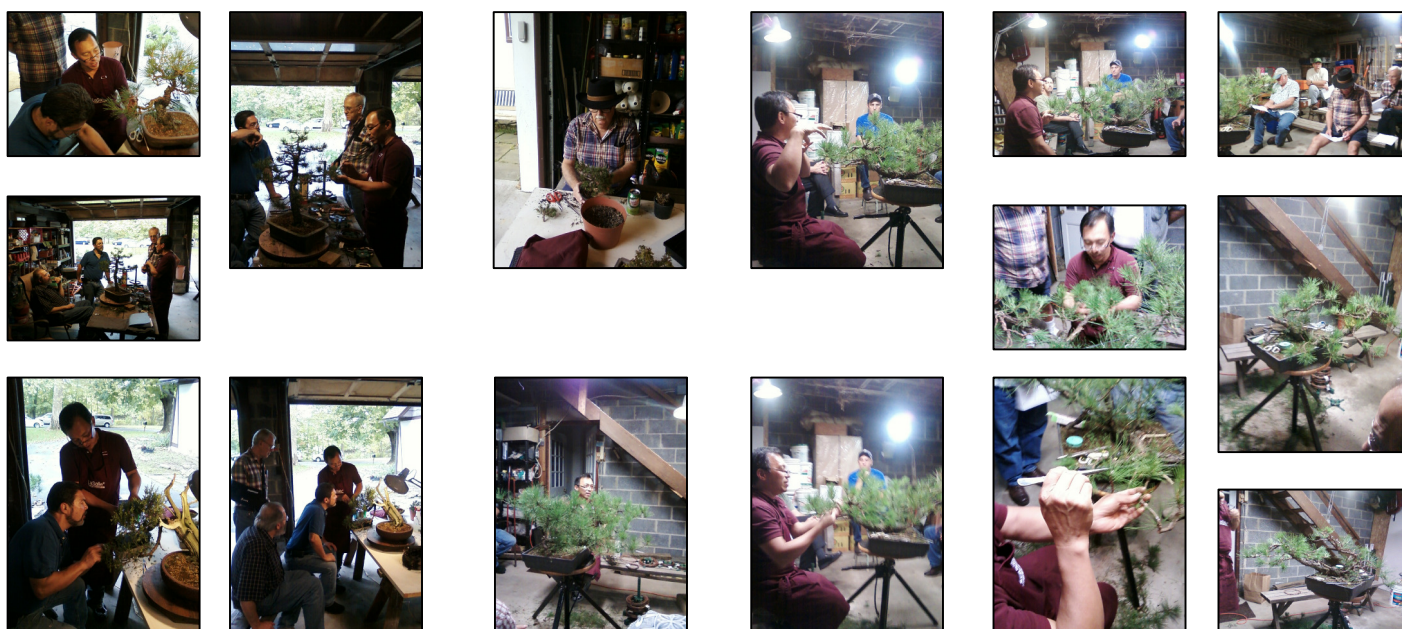
Other topics of interest:

Several topics are still open for future consideration. Among those are:

- 1) Weekend beginner's workshops
- 2) Preparation, cultivation and design of a Club Tree for future fundraising.

If any of these ideas seem like something with which you would like to be involved, please don't be shy. We encourage your input on these and any other ideas, which might be helpful to our club and/or would help in our fundraising efforts. You should also feel free to donate trees, stones, books, tools, pots, etc that can be raffled (not auctioned) for fundraising. See Diego or Fred with your ideas.

We also encourage you to suggest ideas for meeting topics and if you feel able to host a meeting, please speak up. We can help you to work out a "lesson plan" to get you started.





Diego Pablos

Presidents Corner

Hello everyone,

On our September meeting, John Michalski gave us a demonstration on the pruning technic he uses on his broad leaf Bonsai. to improve the bud back and start the design of the tree. This is a similar method used on maples to defoliate to obtain leaf size reduction.

We also had a special afternoon B.Y.O.T. workshop featuring bonsai artist Boon Manakitivipart. Followed by and evening Demo/Lecture, where he showed us the correct method of handling and maintaining pines. We were also lecture on the need for a better soil material for our bonsai, he suggested the use of equal parts of: volcanic rock, pumice and akadama. Hopefully, Those who decide to adopt Boon's methods for repotting and soil mix will keep the rest of us informed on their progress. For anyone interested in acquiring some of the materials to make Boon's soil mix, Club member Chris Kazanecki found a plae in Northern NJ that sells the lava rock already crushed to about 1/4" and it sells a bag of about 40 lb. for around \$10.00. You can get Akadama from many sources online, like New England Bonsai,

Thank you for your continuous support, hope to see you all at the next meeting!
Just a reminder, if you need help with your trees, do not hesitate to bring them and your questions, all club members would be glad in assisting you.

Mark your calendars; the 29th annual MABS Spring Festival will commence Friday evening, April 20, and will continue through Sunday afternoon, April 22, at our family-friendly location: the Holiday Inn Harrisburg-Hershey hotel in PA. This year will also feature the MABS regional runoff for A.B.S- supported Joshua Roth New Talent Competition

Our Next meeting will be held on the third Tuesday of the month, due to election day (Arboretum will be closed). Topic for this meeting; "Importance of keeping good records of your bonsai", different methods used by our club members will be discused.

Dues are due...

It's that time of year again, so please be forthcoming with your dues. Your club is not able to provide guest lecturers, etc without your monetary support, so please... Dues are only \$40 for an individual member or \$50 for a family membership, and helps to support our activities. Please see or contact Fred.

Officers

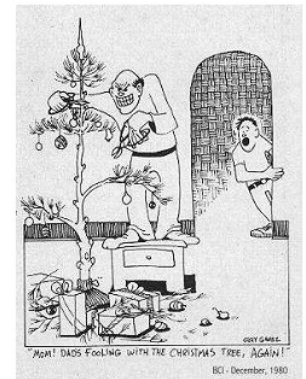
Diego E Pablos President
Michael Markoff Vice-President
Fred Aufshläger Treasurer

Board of Directors

Dan Boehmke, Mark Schmuck,
John Michalski, Brian O'Byrne,
Peter Michienzi, Juan Calderon

Upcoming events:

- Tues., Nov 15 Varied Topics; Care and Maintenance spreadsheets, Winter protection, ...
- Tues., Dec. 13 Club Auction and Holiday Party, bring something to munch on, along with your unwanted tools, books, pots, trees, magazines, etc.. to be included in the auction.
- Tues., Jan. 10 Still to be Determined!!!
- Tues., Feb. 14 Trident Maple Group planting
- Tues., Mar. 13 MABS Tree selection and Air Layering
- Apr. 20-22 2012, MABS @ Holiday Inn in Grantville, PA



Great Swamp Bonsai Society Membership Registration:

Send to:

GSBS c/o Fred Aufshläger _____ New _____ Renewal
17 Lakeview Drive, _____ Individual (\$40.00) _____ Family (\$50.00)
Bernardsville, NJ 07924

Name(s): _____ Email: _____

Address: _____ Phone: (_____) _____

If Family Membership, please list other members:



The Great Swamp Bonsai Society

Great Swamp Bonsai Society
c/o Diego E Pablos
289 Mount hope Ave.
K-12, Rockaway twp.
Dover, NJ 07801

