



arboretum leaves

2008 – 2009 Annual Report

The Friends of The Frelinghuysen Arboretum

A Message from the President

The annual report is a way of looking at what the Friends have accomplished this year and of looking ahead to next year. This is done in the context of our mission statement. The Friends organization was formed to support the Morris County Park Commission in the development of The Frelinghuysen Arboretum and other horticultural facilities and to foster public knowledge and enjoyment of horticulture and the natural world.

In the past year more than 13,000 people have come to the arboretum to take a class, attend a symposium, go on a bus trip, use the Elizabeth Donnell Kay Library, view the Gingerbread Wonderland, take a cell phone tour or take part in our exceptional children's programs.

We offered adult classes in botanical drawing, seasonal and holiday cooking, Tai Chi in the Garden, Botany 101, flower arranging for beginners as well as advanced arrangers, cultivating historic Iris, and propagating Coleus to mention just a few.

We had outstanding speakers. Ken Druse, world renowned author and lecturer, spoke about his latest book "Planthropology" for the first time anywhere at the Frelinghuysen to a sold out crowd. Tovah Martin, author of numerous gardening books and magazine articles, spoke at the Blackburn Scholarship Tea. Marta McDowell, author of "Emily Dickenson's Garden" and a member of the Friends, spoke about local gardening history. Ray Rogers, author and garden writer gave a lively talk on the genus Coleus.

We traveled to other outstanding gardens in the area and teamed up with DIG IT! magazine to visit many rarely seen private gardens. We took our annual bus trip to the Philadelphia Flower Show and enjoyed the theme, "Bella Italia".



continued on page 2

A Message from the President (continued)

In addition to our adult programming it is our desire to “grow gardeners”. We begin with the very youngest, Garden Sprouts, ages three through kindergarten, who get to learn about nature, gardening and associated crafts. They have attended such wonderful classes as “Treats on Trees”, “Salad Daze” and “Bulbs, Bulbs, Bulbs”. For school age children, the “Branching Out!” program is a way to grow, harvest and cook their own fruits and vegetables. A new program was added for middle school children and runs throughout the school year. Our children’s programming has been so successful that this year the Arbor Day Award was given to two young women, Katie DiMare and Laura Jankura, who started out as Sprouts, then “Branching Out!”, and finally as high school students became counselors in the “Branching Out!” program, and volunteers for other children’s programs.

The Blackburn Scholarship has been awarded annually to a student pursuing a career in horticulture, landscape design or a related field. This is the first year that we did not have an applicant who met all of the criteria. As a result we did not award the scholarship. We are looking into new approaches to find a candidate for next year’s award.

The Friends “Plant Sale in the Tent” continues to be our largest fundraiser. In spite of a difficult economy, more than \$21,000 was raised for educational programming. In addition to being our biggest fundraiser it also involves the most volunteers. More than 80 people worked at a frenzied pace the week of the sale. These volunteers are from the Master Gardener Class of 2009, horticulture students at County College of Morris, members of the Friends, and Morris County Park Commission volunteers. We are also thankful for the assistance of the staff at The Frelinghuysen. The Plant Sale also donated \$1500 worth of plant material to the Morris County Park Commission.

The following grants were given by the Friends: \$6500 for teak furniture for the Waterwise Deck; \$6400 for a horticultural intern position at the Frelinghuysen; \$500 for seeds and \$25,000 for the renovation of the lobby at the Haggerty Education Center.

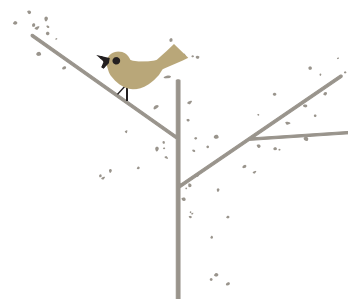
The Friends website (www.arboretumfriends.org) had 47,000 visitors this year which represents a 50% growth from the prior year. Program reminders go out to 850 members via e-mail. This year, members were offered the option of receiving their Arboretum Leaves electronically. We will soon be adding new features and sporting a new look.

2009 saw the first cell phone tours at The Frelinghuysen. They covered areas in the garden like the Japanese Maple collection, a summer display of coleus and a tour of Gold Medal plants, and a joint venture with the Herb Society on the “Change of Life” Garden tour.

Our membership continues to grow and we continue to produce programs of interest to the broader community in order to attract new members. Last summer’s “Focus on Japan” brought many people to the arboretum for the first time. Visitors enjoyed an Ikebana class, a movie night for the kids, a cell phone tour and a standing room only Japanese drum concert. We hope to see many more visitors and new members at this year’s “Focus on Scotland” in July.

The Friends have accomplished much this past year and are eagerly looking forward to an exciting array of programs, classes and lectures for next year. As The Friends’ president, I would like to thank the board for their thoughtful attention and commitment, the staff at The Frelinghuysen Arboretum for making our ideas reality and the Morris County Park Commission for walking hand in hand with us as we strive to reach our goals. And to you our members, “Thanks for being a Friend”.

Sue Acheson
President



*Committee: Bamboo Brook Restoration
Chair: Sally Hemsen*

The Morris County Park Commission has continued to make progress in the restoration of the gardens of Martha Brooks Hutcheson at Bamboo Brook. The Friends of The Frelinghuysen Arboretum contributed financially to the early phases of this project and continue to maintain interest in this important undertaking.

During the past year, work proceeded on this most important phase of the restoration: dealing with drainage and runoff areas and the recreation of the water features. This included the parking area, the entry drive, the pond near the front entrance, the lower circular pool, and the small stream running under the studio. All these areas had a great deal of stonework, including the base and sides of the ponds, the edging, and stairs and wall areas to and from various elevations. The stonework has been completed and looks magnificent. The ponds have been cleaned and re-filled, and final excavation and installation of planting material is taking place at present. It is hoped that this work will be completed by mid-summer.

Once plant material has been installed, the most necessary step of erecting deer fencing will be addressed. The next phase of the project will involve a review of all structures on the site, including several barns and outbuildings, along with the studio and the playhouse.

I encourage members of the Friends to visit this site in the coming months, and view the wonderful results the Park Commission has achieved in restoring this important garden.

*Committee: Nominating
Chair: Jennifer Basile*

The Slate of Officers for The Friends of The Frelinghuysen Arboretum's Board of Trustees for vote this year are:

Second Vice President: Bernice DeCarlo

Treasurer: Beverly Highfield

Congratulations to both and thank you for your continued service and dedication.

*Committee: Blackburn Scholarship Tea
Chair: Joan Buck, Nicky L'Hommedieu
Co-Chair: Betsy Shapiro*

The Blackburn Scholarship Tea was held on March 25th. This was a celebration as it was the tenth year that the tea was held. Over a hundred guests attended to hear our speaker, Tovah Martin, give her program "Trowels and Tomorrow – Garden Stewardship." Tovah is a multi-talented writer, lecturer and television personality specializing in many areas of gardening. The program explored the beauty of the maturing garden.

Following the program, tea punch was served with finger sandwiches and a surprise dessert – birthday cake – for this celebration. These two tea tables were appropriately and beautifully decorated by Marge Hulstrunk. The birthday cakes were from local bakeries and enjoyed by all. Also for everyone's enjoyment there were ten tables set for tea on display. A profit of \$2417.80 was generated from this program.

The staff at The Frelinghuysen Arboretum helped make this a most successful event.



Blackburn Scholarship Tea from left to right: Betsy Shapiro, Tovah Martin, Marge Hulstrunk, Joan Buck, Nicky L'Hommedieu

Plant Sale Donors (Members) 2009

Mr. & Mrs. Frank Allocca
Mrs. Julie C. Baron
Mrs. Mary Bartow
Mr. & Mrs. Tom Binting
Mr. & Mrs. Gordon Brummer
Ms. Jennifer Burns
Ms. Virginia Champion
Mrs. Millicent Cleveland
Mr. & Mrs. D. E. Dalton
Mr. & Mrs. Jack Dempsey
Mr. George Finlay
Peter H. B. Frelinghuysen
Rodney P. Frelinghuysen
Mrs. Mary Barkman Gallion
Miss Elizabeth A. Keat
Mr. & Mrs. Richard Kremenz
Mr. & Mrs. Paige L'Hommedieu
Mrs. Virginia Lyttle
Ms. Grace T. McIntosh
Ms. Dorothy Oravetz
Mr. & Mrs. Fred Palace
Mrs. Madeline S. Pitney
Mr. & Mrs. James Porter
Ms. Joan V. N. Powell
Ms. Dale J. Simpson
Mrs. B. tenHove
Mr. & Mrs. Ben Wolkowitz
Ms. Ellen Wyckoff



*Committee: Plant Sale
Chair: Sue Acheson*

The Friends Plant Sale held the first weekend in May, is the culmination of months of work and one final week of frenzied activity for the plant sale committee, (Sue Acheson, Joan Cousineau, Karen and Jim Curry, Jacky Germanario, Carol Mann, Ilona Ontscherenki, Cynthia Triolo and Toni Rinehart) the staff at The Frelinghuysen and more than 80 volunteers. Without their hard work, dedication and good spirits this event would not be the success it has been for fourteen years.

The Members' Plant Sale Preview Party this year featured locally produced wine and cheeses and a delicious blueberry tea. Our thanks to Cynthia Triolo for seeking out the best that Jersey had to offer. Our plant sale experts did their usual good job of providing information to eager buyers. Two hundred and fifty members took advantage of the opportunity to have first pick of PHS Gold Medal Winning plants, many of which were donated by Monrovia Nursery, the latest "hot" plants found in gardening magazines, shade and sun perennials, annuals, herbs and natives rounded out the choices. Members were also able to pick up their plant dividends Friday night and Saturday.



Happy shoppers at the 2008 Plant Sale.

Saturday's sale, which is open to the public, saw a steady stream of eager plant buyers. We saw an upsurge in membership applications on Saturday which we attribute to the placement of the membership table in the main tent. Plant advisors were on hand to help shoppers make selections.

We are very pleased that in spite of the state of the economy gardeners continue to support the mission of The Friends by their purchases. Our profit this year was \$21,006.48. We donated \$1547.45 worth of plants to the MCPC to be used throughout the park commission's facilities.

*Committee: Website
Chair: Ollie Acheson*

During the last 12 months, we had over 47,000 visits to the Friends website, which represents over 50% growth over the same period in the previous year. Of perhaps more interest is that these visitors accessed over 230,000 pages of material, up over 85% from the prior year. As in prior years, the Photo Gallery, the Events page and, during the months just before the big event, the Plant Sale pages were the most popular destinations.

Our email newsletter, is now distributed every few weeks to 850 participants, which is about 40% more than last year. The email newsletter offers subscribers the benefit of a convenient reminder, delivered to their mailboxes, of the many upcoming Arboretum events.

We expect to continue providing all our Friends with timely information about the many events throughout the coming year. New features will be added and the old favorites will continue to be improved.



*Nicky L'Hommedieu and
Joan Buck*



Laura Jankura



Katie Di Mare

*Committee: Awards
Chair: Ruth Palace*

The major responsibilities of the Awards Chair were readily accomplished in 2009 because there was no shortage of worthy candidates. The Annual Award was given to Valerie Sudol, a horticultural and garden writer for The Star Ledger who is currently writing and speaking independently on garden and landscape topics. Ms. Sudol accepted the award and presented a short program on June 17, 2009 at the Annual Meeting.

The Arbor Day Awards highlighted the incredible service over a 10 year period of immediate past president, Joan Buck, and two exemplary young women, Katie Di Mare and Laura Jankura. Joan has had a long and productive career as a volunteer, and continues to donate her efforts to The Friends in a variety of ways. Katie Di Mare and Laura Jankura are both graduates of the "Branching Out!" Horticultural Education Program who became dedicated volunteers, eager to help throughout their secondary school careers.

The Board was guided by the chairperson in the development of objective criteria for the awards prior to the selection of candidates and the creation of a budget line item for the expenses associated with the awards.



Left to right: Sue Acheson, Valerie Sudol, Ruth Palace

Committee: Programs
Chair: Bernice De Carlo



Ikebana flower arrangement.

This past year has seen over thirteen thousand people take advantage of the many lectures, cooking demonstrations, garden walks, cell phone tours, workshops and the annual Gingerbread Wonderland and Plant Sale in the Tent.

Classes covered a wide range of topics from the always popular cooking classes given

by Chef Cynthia Triolo, to Tai Chi in the garden, botanical drawing and flower arranging. A cell phone tour of the many varieties of Coleus was followed by a cuttings workshop. Bob Solberg, an expert on the genus Hosta, gave a slide presentation on these very popular plants for 30 enthusiasts. Garden walks at The Frelinghuysen and Willowood Arboretums were both educational and inspirational.

There was a full house for world renowned plantsman, Ken Druse, who presented the first lecture in the tri-state area featuring his latest book “Planthropology – The Myths, Mysteries and Miracles of My Garden Favorites”. Members were also treated to a brief slide presentation of the work being done at Greenwood Gardens. The lecture was followed by a tour of Greenwood Gardens, which is being restored to its former glory.

Children’s programs like “Treats on Trees”, “Salad Daze” and “One Leaf Rides the Wind” as well as “Branching Out!”, and school classes foster a love of plants and horticulture.

In October the arboretum continued its “Focus On” Series with “Focus on Japan”. More than 1200 people enjoyed the many activities that took place throughout the month

including flower arranging Japanese style, Ikebana, a special movie night for children and a rousing, standing room only Japanese Drum concert.

As always the Gingerbread Wonderland attracted families, school groups, senior citizen groups and Gingerbread devotees. Over 10,800 people attended this “visions of sugar-plums” event.



A Gingerbread Wonderland First Place winner.

Thanks to the staff and dedicated volunteers for all the time and hard work that goes into making the programs at The Frelinghuysen so varied, enriching and fun.

Committee: Bus Trips
Chair: Sue and Steve George

On Tuesday May 13, 2008, we had the distinct pleasure of visiting the gardens of Henriette Suhr, “Rocky Hills” in Mount Kisco NY, for guided tours of her unique gardens. Now a part of the Garden Conservancy, it is open twice during the spring. It is a “must see” for those who haven’t yet been there. Next, we visited Matterhorn Nurseries in Spring Valley NY. First, we enjoyed a hot buffet luncheon, then tours of the extensive, private gardens of the owner. Finally, we had time to shop in their vast and varied Shopping Village. Steve and I went back to Rocky Hills as part of the Garden Conservancy Open Days – the gardens were even more beautiful.

Tuesday, September 23, 2008 found us at Lyndhurst in Tarrytown, NY (Lyndhurst is a National Trust Historic Site) for a tour of one of Americas’ most outstanding examples of early Gothic Revival Architecture. A long ride through enjoyable countryside took us to Rhinebeck, NY for luncheon at the Tavern at the Beekman Arms. We even had a few minutes to explore a little of this charming town. Just a brief ride took us to Wilderstein, a historic site in Rhinebeck, undergoing ongoing restoration. The interior was beautifully maintained, the barn and carriage house still undergoing renovation. The trip was long with many miles to cover, but the day was beautiful, the tour guides interesting and informative, and luncheon, a pleasant repast.

Wednesday March 4, 2009 was our day to enjoy the Philadelphia Flower Show. The displays interpreted the various areas of BELLA ITALIA. From the Lake Region in the North, through Venice, Tuscany, Milan, Florence, Rome, the Italian Riviera, and the sunny retreats in the South, all were represented in imaginative floral displays.



Taiko drums at “Focus on Japan”.

*Committee: Sunday Series
Chair: Beverly Afonso*

In January 2009 Sue Acheson asked me to join The Friends of Frelinghuysen Board as chair of the Sunday Series committee to replace a vacant position. The programs were in place and scheduled for February and March of 2009. My responsibilities were to plan and set up the refreshments and flower arrangements for two lectures:

February 1, 2009

Beijing De Lu Zin, The Green Heart of Beijing: Its Public Parks and Imperial Gardens. Lesley Parness, Superintendent of Horticultural Education led us through an enchanting journey through Beijing's horticultural history.

March 15, 2009

The Gardens of Japan, Dr. and Mrs. Fred Palace gave us a wonderful view of the history and features of Japanese gardens from a landscape designer's perspective.

Since the theme was Asian Gardens I chose a centerpiece of two Chinese sun umbrellas surrounded with pink azaleas for the Beijing presentation and "mock bonsai" containing Aralias, compact Boston Fern, Baby Tears, Selaginella and Campanula for the Japanese motif.

Home made cookies were supplied by board members. Also served were authentic Chinese almond and coffee cookies and Fortune cookies for some levity, and fruit for health, as well as coffee and assorted Chinese teas.

I am grateful to all who helped and to my family.

Appreciation is extended to our speakers, Lesley, Ruth and Fred for their professionalism in presentation, and their generosity of time and effort to afford the audience an informative and intriguing journey during the dreary winter months.

*Committee: Hospitality
Chair: Sonnie Reutelhuber*

The Hospitality Committee and Board presented the refreshments at the Members New Year's Party in January. It was attended by over 125 people plus the staff. Refreshments consisted of hot and cold appetizers, sweets, spiced cider, coffee and wine. The Board provided most of the refreshments with supplements by the staff. Refreshments were served before the meeting.

The Hospitality Committee and Board will also be presenting the refreshments at the Annual Meeting on June 17. The refreshments will feature cold appetizers, sandwiches and sweets accompanied by wine and an "Among Friends" cookbook non-alcoholic punch. Refreshments will be served after the meeting.

*Committee: Garden Club Liaison
Chair: Janet Allocca*

In September, Scott D'Agostino assisted me once again in getting packets of information concerning the Arboretum fall programs to the member clubs of the Garden Club of New Jersey.

At the request of Lesley Parness, I contacted members of the GCNJ Board and its individual clubs and members of the Garden Club of America to determine which clubs, if any, accepted grant applications. The resulting report was given to Ms. Parness.

During the year, the District Directors of GCNJ were kept aware of the programs at the Arboretum, both by visit to my own District meeting and by phone calls and mailings. Member clubs are encouraged to publish the Arboretum schedule in their newsletters.

The garden clubs throughout the state continue to be enthusiastic supporters of the Arboretum and its programs, not only through my efforts, but through the efforts of our webmaster, Ollie Acheson and our Superintendent of Horticultural Education, Lesley Parness.

*Committee: Graphic Design
Chair: Joan Cousineau*

The following awards were created: The Annual Award, June 2008, given to Marjorie Hulstrunk; Arbor Day 2009, given to Joan Buck, Laura Jankura and Kate DiMare. All awards have an illustration of a green tree, the wording printed over that and are matted in jade green mat board and framed.

For the Plant Sale, I designed the Preview Party invitations, made many signs for the inside of the tent and also designed ads for several newspapers. A new banner was printed this year which was hung on the railroad trestle in Morristown.





A popular spot for wedding photographs at the arboretum.

*Committee: Benjamin Blackburn Scholarship
Chair: Jessica Thorne*

The Scholarship was created in 1979 to honor the memory of Dr. Benjamin C. Blackburn, Professor of Botany at Drew University in Madison, NJ whose professional support was of great help to the Arboretum during its fledgling years. The Scholarship Committee received three applications this year. None had all of the necessary qualifications, making all three applicants ineligible. Therefore, the Blackburn Scholarship was not awarded this year.

A committee has been established to discuss various ways to increase the number of applicants, as well as review other options for awarding the Scholarship. It is hoped that in addition to garnering more applicants, the Friends will also gain public acknowledgment from a broader community and that greater interaction between the School and the Friends can be encouraged.

A final determination as to a course of action will be made in the Fall.



*Committee: Library
Chair: Carol Mann*

The Library Committee has five volunteers: Mary Alonzo, Julie Denzler, Kay Deodene, Juanita Galuzzi, and Carol Mann.

The volunteers meet every Wednesday from 9:30 am – noon in the Elizabeth Donnell Kay Horticultural Reference Library at the Haggerty Education Center. Under the supervision of the Superintendent of Horticultural Education, volunteers care for books in both the circulating collection and the Julia Appleton Cross Rare Book Collection as well as magazines and a growing collection of DVDs.

This year's new books included 26 adult titles and 1 juvenile title. The Book Sale earned a small profit which was used for purchasing Subject Labels to assist the public in finding books.

The Library is open the first Sunday of the month (excluding July and August) from 1:00 pm – 4:00 pm. This provides an opportunity for visitors to learn about us, encourages membership and helps to publicize our programs.

The Library circulation is small, but we are used often by the Staff and by many real garden enthusiasts.

We invite you to visit the Library!

*Committee: Membership
Chair: Bernice De Carlo*

As of May 31, 2009 – 1,262 members

Affiliate	19
Associate	120
Benefactor	3
Complimentary	4
Contributing	10
Extended Family	40
Family	307
Honorary Life	1
Individual	597
Life	9
Nursery	23
Organizational	43
Patron	5
Student/Teacher	8
Supporting	73

*Committee: Youth Education
Chair: Larissa Bohensky*

The Frelinghuysen Arboretum youth gardening programs remain very popular, attracting many children, visitors and new members.

Many of our youth visitors come on school field trips. Our four school class volunteers and staff conducted 61 workshops and introduced almost 1300 children to seed and seedling planting, exposing them to the beauty of the Arboretum and the wonder of plants. Usually, the field trip program is booked to capacity and not all requests for trips can be accommodated.

The Garden Sprouts program for 3 – 5 year olds continues to be very successful and popular. Here the young children are introduced to plants and the natural world with fun activities and take home crafts. This year, there were 24 classes, almost all filled to capacity. A special Holiday Sprouts program was held, where 16 children made centerpieces using various natural materials.

“Branching Out!” is a very popular gardening program where children learn to cultivate soil, plant, tend to and harvest their crops. The children also do some cooking and various nature related crafts. Last summer there were 58 children enrolled, this spring there are 61. Twelve young volunteers, most of them former “Branching Out!” participants, help with the program. The volunteers also installed a patio sitting area in the “Branching Out!” gardens, made possible by a memorial grant from the Garden Club of Morristown. This spring, new raised beds were built for the “Branching Out!” gardens, funded by a grant from The Friends.

Various scout groups come for after school activities. This spring, five troops involving 71 children came for workshops to earn their badges.



Fairy Day participant readies new home for garden fairies.

Matilda’s Tea Party is another popular and fun event for young people. This “dress-up” event was the sixth annual tea. Ninety guests attended. This year’s theme was “A Dog’s Life”, about the many dogs Matilda Frelinghuysen loved and cared for. A guest speaker from St. Hubert’s talked about service dogs and was accompanied by her own dog.



Junior Master Gardeners

The Friends continue to support the Junior Master Gardener program, now in its fourth year. Fourteen children participated, this year focusing on flowers. At The Friends annual plant sale, the Junior Master Gardeners earned \$1000 from the sale of tomato plants they grew from seed. They are donating this money to a local charity, “Good Grief”, which provides support to children nationwide who have lost a parent and are in need of financial and emotional support.

A new program, “Middle School Mondays” has been introduced for children grades 6 – 8. The program combines horticultural learning with community service. Thirteen children have enrolled. They are already contributing, having cleaned up the retention basin, created displays and promotional flyers.



Committee: Garden Collections — Chair: Karen Curry

The gardens have 1967 plants in the collection, not counting annuals. The planning and maintenance of a public garden is a juggling act to save old specimens and plant to insure new specimens will be there to take their place. For example, near the back gate on Whippany Road, a group of 40 foot red pines is aging. At one time Canadian hemlocks were interplanted and have now reached about 15 feet. To insure a next generation 43 white pines have also been planted in this area.

In Cherry Valley, an area to the right of the entrance drive, is another example of planting to insure continuation. Oak trees, grown from acorns of the black oaks at Mennen Arena and Royal azaleas raised from seed from Willowood will replace aging dogwoods. In addition, Arbor Day recognition plants have been planted as well as a Stewartia seedling from Willowood, and an Edith Bogue Magnolia. All will do well in the mini climate of this valley.

The Entrance meadow is being planted with tough plants such as Chinese lilacs, mock oranges and deutzias which are deer resistant. A large Sweet Gum and Bradford pear, which were crowding the area, have been removed.

Part three of the renovation of the Linder perennial garden is completed. Staff and interns raised the large oval bed in the sunny, center of the area by building it up and edging

with stone. This improves drainage and matches the existing stone in the area. Plants were purchased and secured from all parts of the garden and divided before planting.

The Lampi Shade garden, which is a lovely pocket garden near the house, has been renovated. Staff removed two styrax that had overgrown the area and new shade plants were added. The music of the water in the fountain and a bench provide a restful place to sit in the shade.

Deer, the bane of all Morris County gardeners, are a persistent problem at the Arboretum. The deer fencing is completed, with eight foot black chain link on two sides and less expensive woven wire fence installed in the woods, where it is less visible. However, hungry deer still get into the garden through the gates. The next step is to install a cattle guard at the front gate and taller, automatic gates at the Hanover Road exit. The hill inside the front entrance makes an automatic gate option impractical in icy weather. Meanwhile, the Hanover Road gate remains closed to discourage the deer for now.

Be sure to walk the garden often, there is always so much to see thanks to John Morse, his staff and the volunteers under the supervision of Kate Guterrez and the GardenWorks Program.



Spring tulip display.

Treasurer's Report – Beverly W. Highfield, Treasurer

Balance Sheet – May 31, 2009

Cash Basis

Cash in Banks and On Hand:

General Fund (Checking, Interest Bearing) The Provident Bank	\$ 122,442.73
General Fund (Checking, Interest Bearing) Peapack-Gladstone Bank	50,882.44
Certificate of Deposit, The Provident Bank – matures 7/14/2009	28,434.80
Petty Cash Fund	200.00
	\$ 201,959.97

Reserves and Balances

Special Reserves	\$ 31,643.32
Operating Funds	170,316.65
	\$ 201,959.97

Statement of Special Reserves

	Balance June 01, 2008	Deposits	Disbursements	Balance May 31, 2009
Cutting Garden	\$ 727.73		(\$ 139.89)	\$ 587.84
Kitchen Project	4,917.34		(46.10)	4,871.24
Exhibit Display	5,000.00		(695.98)	4,304.02
Lobby	25,000.00		(23,571.27)	1,428.73
Carriage House	806.49			806.49
Cell Phone Tours	3,000.00		(2,255.00)	745.00
“Branching Out”		\$ 8,500.00	(8,500.00)	0.00
Exhibit Panels		7,000.00		7,000.00
Traveling Exhibit		5,000.00		5,000.00
Horticultural Intern		6,400.00		6,400.00
Plants		500.00		500.00
Teak Furniture		6,562.56	(6,562.56)	0.00
	\$ 39,451.56	\$ 33,962.56	(\$ 41,770.80)	\$ 31,643.32

Treasurer's Report

(continued)

Statement of Income and Expense June 2008 through May 2009

Ordinary Income/Expense	Jun '08-May '09	Budget
Income		
Branching Out	\$ 18,521.56	\$ 15,000.00
Donations – General Fund	5,986.13	0.00
Donations – Gingerbread Show	10,595.50	8,500.00
Donations – Branching Out	50.00	500.00
Interest-savings / short-term inv	3,531.11	2,000.00
Library – book sale	408.20	500.00
Matilda's Tea	1,890.00	
Membership Dues – Individuals	50,060.00	45,000.00
Plant Sale Income	59,492.20	50,000.00
Programs Income	49,970.57	40,000.00
Scholarship Tea Income	0.00	4,000.00
Sprouts Income	605.00	
Total Income	\$ 201,110.27	\$ 165,500.00
Expenses		
Administrative I	\$ 20,402.00	\$ 22,338.00
Administrative I Vacation	892.00	892.00
Administrative II	17,644.00	19,320.00
Administrative II Vacation	772.00	772.00
Arboretum Leaves Expense		
Arboretum Leaves Postage	705.05	
Arboretum Leaves Expense – Other	5,558.39	9,500.00
Total Arboretum Leaves Expense	\$ 6,263.44	\$ 9,500.00
Audio-Visual Supplies	16.79	100.00
Awards	370.06	300.00
Bank fees	12.00	0.00
Branching Out Expenses		
Branching Out Wages	5,890.17	
Branching Out Expenses – Other	8,594.94	11,000.00
Total Branching Out Expenses	14,485.11	11,000.00
Bus Trips Expense	5,161.23	10,000.00
Flower Arrangers	758.26	750.00
Gifts	570.00	0.00
Gingerbread	1,499.57	2,000.00
Horticulture Therapy	531.98	700.00
Hospitality Expense	1,505.47	2,250.00
Insurance Expense	3,705.00	2,500.00
Jr. Master Gardener Expense	119.76	
Library Expense	1,173.18	1,000.00
Membership/Dues	330.00	400.00
Office Expense	93.18	0.00
Plant Sale Expenses	38,285.72	25,000.00
Postage, shipping, delivery	5,813.60	4,500.00
Printing & copying	1,727.71	2,000.00
Professional fees	2,289.10	2,500.00
Program expenses	21,479.33	25,000.00
Publicity/Advertising expenses	3,729.73	5,000.00
Scholarship expense	5,000.00	2,500.00
Scholarship Tea expense	4,000.10	2,500.00
Special Reserve Disbursements	49,280.85	
Sprouts expense	(48.00)	
Transfer funds to new bank	0.00	
Transfer funds to Provident Bank	0.00	
Volunteer expense	2,524.18	2,500.00
Youth Gardening expense	0.00	1,000.00
Total Expense	\$ 210,387.35	\$ 156,322.00
Net Ordinary Income	(9,277.08)	9,178.00
Net Income	(\$ 9,277.08)	\$ 9,178.00

Donations

Many of the programs, projects and activities of The Friends of The Frelinghuysen Arboretum and the Horticulture and Natural Resources Department of the Morris County Park Commission are made possible through the generosity of individuals, organizations and businesses in the community. We thank all of the following individuals, organizations and businesses and the Plant Sale Donors listed on page 4, who made contributions to The Friends of The Frelinghuysen Arboretum from June 1, 2008 through May 31, 2009.

Individual Donors

Frank & Janet Allocca
Amanda Austell
Julie C. Baron
Mrs. Mary Bartow
Tom & Joanne Bintingier
Sally-Gordon Brummer
Mrs. Joan Buck
Jennifer Burns
Virginia Campion
Mrs. Millicent Cleveland
Mr. & Mrs. D. E. Dalton
Alice & Jack Dempsey
George Finlay
Peter H. B. Frelinghuysen
Rodney P. Frelinghuysen
Mary Barkman Gallion
Elizabeth A. Keat
Mrs. Mary Keselica
Peggy & Dick Kremenz
Mr. Jules Kurtz
Mr. & Mrs. Paige L'Hommedieu
Mrs. Virginia Lyttle
Grace T. McIntosh
Mrs. Dorothy Oravetz
Ruth & Fred Palace
Madeline S. Pitney
Katie Porter
Joan V. N. Powell
Mr. & Mrs. Martin Prentice
Ms. Beth Shirley
Dale J. Simpson
Valerie Sudol
Beate tenHove
Lois & Ben Wolkowitz
Ellen Wyckoff

Business & Organizational Donors

Agway Farm, Home & Garden
Alstede Farms LLC
Ambleside Gardens & Nursery
Atlock Farms
Bernardsville Garden Club
Brookside Garden Club
Cerbo's Garden Center
Conard-Pyle Company
Concurso's Garden Center
Country Mile Gardens, Inc.
Coviello Brothers, Inc.
Donaldson's Greenhouse & Nursery
Fairfield Home & Garden Center
The Farm at Green Village
Garden Club of Caldwell
Gardens of the World
Great Swamp Greenhouses
Hall's Garden Center
Hamilton Farms
Heart's Ease Nursery
Hildebrant Nurseries
J&M Home & Garden
Kings Super Markets, Inc.
Steven Kristoph Nursery
Kuperus Farmside Gardens
Lockwood Farms
Monrovia
Morris County Farms, Inc.
New Jersey Committee of the GCA
Parker Gardens
Peony's Envy
Plant Detectives, Inc.
Pleasant Run Nursery
Poplar Wood Farm, LLC

Rare Find Nursery
Redwood Gardens Nursery, Inc.
Ridgedale Florist & Nursery
Rockaway Garden Center
Russell Gardens Wholesale
Stony Hill Gardens
Tri-State Hosta Society
Walter's Garden Center
Williams Nursery
Zone IV GCA

Donations for Memorials, Gardens & Special Projects

In loving memory of
Jeanne Schmitt
Mr. & Mrs. Larry Levine

In loving memory of
John Van de Water
Mr. & Mrs. William Kranichfeld

Joan Murray Memorial
Garden Club of Morristown

Miscellaneous Donations

Bernardsville Garden Club
Joan Buck
Garden Club of Caldwell
Jack Dempsey
Kings Super Markets, Inc.
Pfizer United Way Campaign
New Jersey Committee
of the GCA
Beth Shirley

In memory of Joan Murray
Garden Club of Morristown

In memory of Jeanne Schmitt
Larry & Ronnie Levine

Volunteers

Abrams, Donald	DeCarlo, Bernice	Highfield, Beverly	McDowell, Marta	Sample, Margot
Acheson, Ollie	DeGroat, Dorothy	Hofler, Virginia	McGreevy, William	Sattari, Sharon
Acheson, Sue	de Jaager, Linnea	Hudson, Nicole	McNierney, Donna	Scheidecker, Richard
Afonso, Beverly	Denzler, Julie	Hughes, Billy	Medd, Taylor	Scher, Joan
Allocca, Janet	Deodene, Kay	Ireton, Renee	Melcher, Barbara	Schleicher, Judith
Alonso, Mary	Di Domenico, Gail	Jackson, Marla	Merritt, Hugh	Schmuck, Sheila
Arturi, Elizabeth	Digleo, Marianne	Jacobson, Andre	Miller, Elenor	Scholz, Rosemary
Baron, Julie	Di Mare, Michael	Jankura, Laura	Miller, Shayna	Schwager-Miles, Lynn
Barry, Connie	Doman, Jeannette	Jardula, Connie	Mills, Betty	Schwartz, Anne
Basile, Jennifer	Donato, Stephanie	Jenkins, Diane	Moore, Jane	Scor, Sara
Bellando, Elaine	Donn, Helen	Johnson, Ann	Moran, William	Scott, Pauline
Benedict, Barbara	Donohue, Miriam	Judd, Ellen	Muir, Aretta	Shapiro, Betsy
Bennett, Debbie	Draper, Jan	Kane, Bernadette	Muir, James	Slegona, Brian
Bennett, Mary Ann	Dwyer, Jane	Kanoc, Andrea	Mulvihill, Gail	Smith, Barbara
Bennett, Michael	Esposito, Al	Keithler, Susan	Murphy, James	Spencer, Betty
Best, Joan	Faiella, Lou	Kenny, Peter	Nadolny, Barbara	Spencer, Elaine
Best, Michael	Faiella, Sherry	Kenny, Virginia	Napoletano, Franco	Spencer, Libbey
Bigelow, Deborah	Fargnoli, John	Keselica, Mary	Naugle, Joan	Spenninger, Evelyn
Blasko, Shirley	Feehan, Lori	Kilby, John	Nelson, Barbara	Spicer, Frances
Blasko, Tim	Feno, Barbara	Kleiner, Marjorie	Nevins, Debbi	Stahlhut, Trish
Bodnar, Rosalie	Fredericks, Jeanette	Knapik, Lucille	Nichols, Cathy	Steinert, Cory
Bohensky, Larisa	Freiermuth, Joyce	Kobesky, Daryl	Nielson, Ruth	Street, Elva
Boney, Nancy	Galluzzi, Juanita	Kratch, Jenny	Norris, Mary Lynne	Sullivan, Jennifer
Bowers, Hollace	George, Stephen	Kratz, Ethel	O'Melia, Robert	Sulpy, John
Boyle, Maura	George, Susan	Kristoph, Steven	Ontscherenki, Ilona	Sutherland, Julie
Branigan, Beth	Germinario, Jackie	Kulesa, Teri	Paglinco, Anthony	Tasker, Michael
Brennan, Madeline	Gibb, George	LaMarca, Anton	Palace, Ruth	Tauz, Christine
Brennan, Mary	Gilliland, Valarie	Lamour, Barbara	Parr-DiLeo, Eleanor	Tecza, Laura Jean
Brennan, Peter	Giordano, Tutty	Lange, Christa	Pellet, Helen	ten Hove, B.
Buck, Joan	Goldberg-O'Neil, Sarah	Laska, Vivian	Percarpio, Cynthia	Thorne, Jessica
Bucuk, Debbie	Gonski, Sandi	Leach, Sydney	Poff, Doug	Tintle, Debbie
Bush, Mary	Greenberg, Ben	Leahy, Valerie	Poff, Kathy	Triolo, Emma
Carr, Sherrie	Greenberg, Nance	Lee, Betty Ann	Potkay, Wendy	Triolo, Sam
Chopko, Roberta	Greenberg, Adrienne	Lee, Preston	Powell, Joan	Truzzolino, Terry
Chen, Sue	Griffin, Pat	Lee, Royce	Raskin, Natalie	Wadhams, Tracy
Clarkin, Elizabeth	Gutierrez, Kate	Lehrhoff, David	Rees, Eileen	Wadia, Geraldine
Clarkin, Moira	Haake, Robert	Lehrhoff, Sydney	Rega, Catherine	Walker, Maureen
Collica, Sarah	Haake, Susan	Leloia, Sue	Remeika, Marge	Watson, Hela
Cohen, Willie	Haley, Pearl	Lewis, Judy	Reutelhuber, Sonnie	Watson, Martha
Conover, Patti	Harrington-Noonan, Jane	Lewis, Margaret	Reynolds, Crary	Watson, Nicole
Coutain, Patty	Hartmann, Barbara	L'Hommedieu, Nicky	Riker, Bunny	Watson, Patricia
Cousineau, Joan	Hays, Pat	Lombardi, Chris	Rindal, Karin	Weinstein, Maxwell
Cramer, Chris	Hemmer, Beth	Macleod, Jeana	Rinehart, Antoinette	White, Eric
Crofton, Marilyn	Hemsen, Robert	Magarelli, Anthony	Rishe, Margo	Whitehead, Lynn
Curry, James	Hemsen, Sally	Mangiola, Frances	Roche, Vera	Wickens, Patricia
Curry, Karen	Hennessey, Dorothy	Mann, Carol	Rodgers, Miles	Wilkins, Eric
Dahlen, Philip	Hennessey, Paul	Margiotta, Kathleen	Rolston, Patricia	Wolfe, Jacqueline
Dandurand, Beverly	Herbert, Ivory	Matlon, Janice	Rossettie, Patrice	Yantz, Nancy
Daniels, Linda	Hesslein, Heidi	Matthijssen, Tyler	Rufener, Carol	Yeung, Don
Dawson, Eileen	Hesslein, Richard	McDonald, Kim	Salisbury-Ragucci, Ellen	Zimmerman, Patricia
				Zurcher, Doris

New Members

As of July 1, 2008

Agway Farm, Home & Garden

Phyllis Alexander

Joseph & Nancy Bailor

Linda O. Baker

Mary Ellen (Molly) Ball

C. M. Ballard

Claire Baragona

Connie Barry

Barbara Bechtold

Michael Bedrick

Linda D. Bell

Ann & Alan Bernstein

Jay Bernstein & Holly Gehrie

Marge Birdsall

Nancy Blazier

Diane Bonifanti

Vicki Bozzi

Gabriella Brandeal

Gretchen Braunschweiger

Rosemary Brewer

Melanie Brooks, Lynn Scully,

Jean Marie Smith

Becky Bucari

Tina Buchel

Catherine Buhler

Emily Buhler

Sheila Butler

Denise Caparoso

Cerbo's Garden Center

Tom & Sheryl Ciccarelli

Arejay Clark

Lenora Clark

Hilary & Michael Clayton

Karen Codd

Ellen & Donald Coburn

Amy Comeskey

Conard-Pyle Company

Suzanne Conte

Country Mile Gardens, Inc.

Jana Tognoli Crema

Karen Cucci

Anthony Danese

Linnea DeJaager

Deborah Delisi

Maryjo Dell'Orto

Peter DeLotto

Demitre Family

Janice DePinto

David & Kathy DePiro

Diane Deutsch

Debbie Diaz

Kelly Do

Regina Doherty

Donaldson's Greenhouse
& Nursery

Donna Douglas

John Dransfield

Renee Drell

Kathy Duane

Michael Duszynski

Erich K. Ernst

Ida Esposito

Kathy Esposito

Sal Esposito

Fairfield Home & Garden Center

Benjamin Fay

Lori Feehan

Harry Feinberg

Floraphile Garden Club

Jean Foldy

Nancy & Flo Brown Foley

Dr. & Mrs. Robert Fredericks

Edmond and Barbara Fursa

Lisa O. Gadsden

Debbie Ganncorti

Gardens of the World

Jeannie Geremia

Stephanie Glazer

Barbara Godleski

Diane Goetz

Linda Goff

Diane Goldberg

Irwin Greenberg

Jean Francais &
Karein Guglielmetti

Mary Gustafson

Hall's Garden Center

Jeanne Hantson

Margaret Hao

Barbara Hinds

Laura Holdsworth

Jennifer Holloway

Rumina Hosain

Carolle Huber

John S. Hudson

Mr. & Mrs. Charles Ingraham

Joseph & Josephine S. Iscaro, Jr.

Norman James

Mary Jasch Dig It!

Diane Jenkins

Susanne Jensen

Lori Johansen

Barbara Johnson

Gayle Jones / A. L. Alleman

Rufus Jones

Tony Jones

Dot Kamphausen

Maryann Karasek

Lori Kingman

Kitchin Family

Catherine Klahre

Tanuja Koppal

Robert Korfin

Perry & Helene Kotzker

Esther Kretchmer

Shankar Krishnan

Cheryl Lamanec

Jean La Platte

Christine Law

Valerie Leahy

New Members

As of July 1, 2008

Betty Ann Lee	Barbara Pape	Jeanne Shanley
Mihori Lee	Mihyang Park	Louise Shapiro
Beverly Leeson	John Parmigiani	Gail Shaw
Carolyn Sue Leloia	Richard Paska	Sabetay Sides
Susan Lindstedt	Linda Pastorino	Frederick C. Skarva
Claire J. Lisa	Wing-Yee Chu Pavlosky	John Smith
Lockwood Farms	Peony's Envy	Desia Spriggs
Barbara Lombardo	Stephanie Philwyn	Sarah Stanley
Cyndy Losanno	Andy Pillsbury	Marina Stead
Diane & Frank Luzzi	Karen Piznak	Barbara Stein
Joan Lynch	Pat & Richard Podell	Elaine Stevenson
Judith Lyons	Stephen & Laurie Pribula	George & Eileen Suarez
Rachel J. Mandel	Kathryn Ptacek	Margie Sue
Frances Mangiola	Carol Punturieri	Rosalie W. Szeman
Kathleen O. Margiotta	Subashree Rajagopal	Tolga Taneli
Gail Markitto	Rare Find Nursery	Jessica Terreri
Valerie Marr	Amira Rashad	Scottie Teschner
Judy Martorelli	Carole Rella	Thompson-DiPalma Family
Irene Marx	Ed Retlewski	Jim & Margaret Trotman
Lorraine Matys	Tibbie & Bob Reynolds	Elizabeth True
Joy Mazur	Sheila Rhoades	Robert and Sandina Turpack
Tom McDonnell	Sandy Richenaker	Lynn Uhrig
The McNaughtons	Ridgedale Florist & Nursery	Vivian C. VanBlarcom
Linda Shehan McNeer	Rockaway Garden Center	Gerry VanTassel
Heather Medd	Ed & Diane Rosenblatt	Christine Volinsky
Jill and Thomas Moore	Geoffrey Ross	Peggy McDonnell Walsh
Ryan Moore & Family	Natalie C. Rowell	Walter's Garden Center
Peggy Moskway	Rutgers University	Martha Watson
Phyllis Nagelberg	Alexander Library – SPCOL	Amie Weiss
Yoshinao & Anna Nakada	Linda Ryan	Debbie Wikander
"Polly" Margaret Nankivell	Deborah Sandford	Scott & Susan Wilhelm
Franco Napoletano	Alma Santiago	Karen Wilk
Mrs. Rae Narasimhan	Richard Scheidecker	Williams Nursery
Austin & Linda Neary	Irene Scherer	Frank, Ingrid & Ingrid Helen Witty
Patricia A. Nell	April Schneider	Phyllis Wohl
Agnes T. O'Brien	Kathryn Schneider-Doyle	Stephanie Wolfe
Shirleen T. Offermann	Name withheld	Nancy Yantz
Peg Ogden	Sara Schorr	John Zanone
C. K. Olinger	Megan Schwarzkopf	Alice K. Zelman
Marian Ott	Ellen & Jason Seidl	



*The Friends
of The Frelinghuysen Arboretum
53 East Hanover Avenue, P.O. Box 1295
Morristown, NJ 07962-1295*

Arboretum Leaves is published quarterly by
The Friends of The Frelinghuysen Arboretum.
973-326-7603 www.arboretumfriends.org

Sue Acheson
President

Karen Curry Bernice DeCarlo
Acting 1st Vice President 2nd Vice President

Sally Hemsen Beverly Highfield
Secretary Treasurer

The Morris County Park Commission and The Friends of The Frelinghuysen Arboretum invite everyone to participate in their programs. If you require an interpreter for the deaf or other accommodations, please contact us at 973-326-7603 or TDD 1-800-852-7899. Please provide two weeks notice.



FIRST CLASS MAIL

membership form



Yes, I would like to join The Friends of The Frelinghuysen Arboretum.

Name _____

Address _____

City _____ State _____ Zip _____

Home phone _____

Secondary phone Work Cell Other _____

Email _____

- Individual Membership\$25
- Family Membership\$35
- Extended Family Membership\$45
- Associate Member\$50
- Supporting Member\$100
- Contributing Member\$250
- Patron.....\$500
- Student Membership.....\$15
must be 18+ and provide appropriate ID

Make checks payable to "Friends" and mail with membership form to:
Friends, PO Box 1295, Morristown, NJ 07962-1295

For more information about membership,
please call 973-326-7603, or visit
www.arboretumfriends.org