



arboretum leaves

spring 2021

Friends of The Frelinghuysen Arboretum

The Friends are having a 24th & 1/2 Annual

Plant Sale

this Spring!

Although we still won't be able to throw a big Silver Anniversary Party this year, as we'd truly like to do, we've decided to indulge your passion for plants by hosting an online sale of select plants. If you've been watching our programming, you've already started planning for this year's garden season by attending our free talks during February and March. Now you can check out our Online Plant Sale at arboretumfriends.org and schedule a time to collect your hand-picked plants curbside by the big tent at the Frelinghuysen Arboretum during the first weekend in May. And don't just stop with plants on your list, get one for your mother, your best friend, your neighbor. Spread a little joy!

All social distancing, mask mandates, etc. will be followed and timed pickup will be implemented to reduce the number of cars at any given time.

Get in touch if you have questions at mennist@arboretumfriends.net, lbencivengo@arboretumfriends.net, or leave a voicemail at 973-937-8803.

*2021 Plant Dividends – See website for details.
See page 4 for FREE Virtual Plant Sale Preview Talks*



Happy Gardening from
the Plant Sale Team!



notes from the board

"In the safe curtilage of the garden, I am in the kind of company that allows me to be alone and enter my own world." – Susan Stuart-Smith

HELLO SPRING! As I write this it is February and our gardens are covered with a deep and protective blanket of snow. We are in what my father coined the 'intimation of Spring'. Under the cloak of snow are bulbs sending up shoots, and above, the delicate beauty of swelling tree buds. The promise of what is coming brings me a comfort better than bread.

So far this year we seem still in the valley of the shadow of death. Not just because of the loss of lives due to Covid-19 but by the loss of our ordinary way of life. No better time to be reminded that, botanically, Spring has sprung and that we might find solace in the prospect of the future that gardens provide.

In a recent conversation with Past President Sally Hensen we spoke of the Frelinghuysen Arboretum as a place of renewal for so, so many people in the community and how beloved the property is. During the course of 2020 and into 2021, the Friends received many communications about memorial trees, benches, and donations in honor of someone that enlivened themselves through their engagement at The Frelinghuysen Arboretum. For me, I grew up less than a mile from what was then Mathilda Frelinghuysen's Whippany River Farm. It was a playground of mine full of places for me to invent, invite, and clarify my thoughts and feelings.

I think most of my teenage angst is still in the meadow, by a rock, by the Whippany River.

Since 1972 the Friends and the Morris County Park Commission have maintained and protected that playground of nature for all to enjoy.

In the coming months, as a welcome back to volunteer efforts at the Arboretum, the Friends will develop a map tour of the Annual Award memorial trees and woody ornamentals at The Frelinghuysen Arboretum. In this newsletter is a list of those trees and for all of you who have loved the Arboretum or who love the memory of one who treasured the place, we know how you feel.

It's been a while since volunteers had the ability to support the efforts of the Friends and The Frelinghuysen Arboretum but it won't be long. Hopefully by September. Take a moment to consider how you could dedicate a slice of your time to help us bring the beauty of the natural world to everyone in our orbit.

And stay in touch!

Yours in horticulture,

Heather Emelander

President, Friends of The Frelinghuysen Arboretum

The Friends are taking the months of July and August off from programming and will be back in September with our usual great educational lineup.

Friends Member's Only Annual Meeting

Virtual Zoom Meeting

Peter Nitzsche, Morris County's Agricultural Agent and New Jersey's small fruit expert presents "Growing Strawberries in the Home Garden". Nothing quite compares to the flavor of a fresh, ripe, locally grown strawberry. Luckily, strawberries are one of the easier fruits to grow in the home garden. Learn a bit more about growing strawberries, a few tips and tricks to maximize the harvest, and about pests and problems you might encounter along with how to manage them.

This program is eligible for 1.0 Rutgers Master Gardener CEU's.

Following Peter's talk, enjoy a strawberry cooking demonstration just for members with resident chef Cynthia Triolo.

Date: Sunday, June 13

Time: 4:00 pm

Cost: FREE, but registration is required.

Please note this program is for members only.



Arbor Day Awards

Every year, since 1978 the Friends have acknowledged those people who have made outstanding contributions to and had an incredible impact on our organization by planting a tree in their honor. Below is a list of those well-deserved recipients who have dedicated their time, expertise and energy into making the Friends of The Frelinghuysen Arboretum the premier horticultural institution in the State of New Jersey.

Year	HONOREE	TREE PLANTING
1978	Josephine Lloyd	<i>Parrotia persica</i>
1979	Carl Keuffel, Sr.	<i>Stewartia pseudocamellia</i>
1980	Elizabeth Donnell Kay	<i>Magnolia virginiana</i> 'Jim Wilson' Moonglow
1981	Henrietta Shangle	<i>Fagus sylvatica</i> 'Asplenifolia'
1982	Mr. & Mrs. J. Duncan Pitney	<i>Styrax japonicus</i> 'Carilon'
1983	Samuel Kollar Elsa Hetterley	<i>Styrax japonicus</i> <i>Styrax japonicus</i> 'Kusan'
1984	Dorothy Northup	<i>Sorbus aucuparia</i>
1985	Gerda Felter	<i>Crataegus laevigata</i> 'Superba'
1986	Connie & Don Davey	<i>Crataegus viridis</i> 'Winter King'
1987	Robert & Florence Zuck	<i>Prunus</i> 'Snow Goose'
1988	Ralph Cutler, Jr.	<i>Ilex opaca</i>
1989	Alice Kollar	Tree dedicated at Arbor Day
1990	Emilie Hammond	<i>Amelanchier canadensis</i>
1991	Clarence (Pete) Peterson	<i>Quercus acutissima</i>
1992	Helen Fenske	<i>Amelanchier canadensis</i>
1993	Evelyn Miller	<i>Magnolia</i> × <i>loebneri</i> 'Merrill'
1994	Preston Pearlman	<i>Davidia involucrata</i>
1995	Mary Lou Curran	<i>Styrax japonicus</i> 'Pendula'
1996	Steve & Susan George	<i>Liquidambar styraciflua</i> 'Rotundiloba'
1997	Royce Lee	<i>Cornus</i> × <i>rutgersiensis</i> (Stellar Group) 'Rutgan' Stellar Pink®
1998	Marge Van Ryzin	<i>Cornus mas</i> 'Redstone'
1999	Betty Sweeney	<i>Maackia amurensis</i>
2000	Valarie Gilliland	<i>Prunus</i> 'Snowfozam'
2001	Rene Phelan	<i>Prunus</i> 'Okame'
2001	Mary Sambrook	<i>Ulmus parvifolia</i> 'Emer I' Athena®
2002	Sue Acheson Janet Allocca Nancy Soward	<i>Acer buergerianum</i> <i>Acer buergerianum</i> <i>Acer buergerianum</i>
2003	Joan Cousineau Elva Street	<i>Styrax obassia</i> <i>Chimonanthus praecox</i>
2004	Ann & Don Abrams Sherrie Carr	<i>Viburnum</i> × <i>burkwoodii</i> 'Mohawk' <i>Viburnum opulus</i> 'Roseum'
2005	Oliver Acheson Robert O'Melia Jill Sculley	<i>Amelanchier laevis</i> <i>Chionanthus virginicus</i> <i>Ilex</i> × <i>aquipernyi</i> 'Meschick' Dragon Lady

Year	HONOREE	TREE PLANTING
2006	Carol Mann Preston Lee Lynn Stowe	<i>Corylopsis spicata</i> <i>Aesculus parviflora</i> /Hydrangea paniculata 'Zwijnenburg' Limelight <i>Syringa</i> × <i>chinensis</i>
2007	Karen Curry Betty Thomas Frank Donn	<i>Cercis canadensis</i> 'Pauline Lily' <i>Amelanchier canadensis</i> <i>Ilex</i> × <i>aquipernyi</i> 'Meschick' Dragon Lady
2008	Sally Hensen Nicky L'Hommedieu Sonnie Reutelhuber	<i>Pinus banksiana</i> <i>Magnolia grandiflora</i> 'Edith Bogue' <i>xCupessocyparis leylandii</i>
2009	Joan Buck Katie DiMare Laura Jankura	<i>Magnolia grandiflora</i> 'Edith Bogue' <i>Viburnum trilobum</i> 'Wentworth' <i>Lagerstroemia indica</i> 'Pink Velour'
2010	Phil Dahlen Bernice DeCarlo Barbara Nadolny	<i>Acer</i> 'White Tigriss' <i>Wisteria floribunda</i> 'Longissima Alba' <i>Calycanthus raulstonii</i> 'Hartlage Wine'
2011	Mary Alonso Gwen Montgomery	<i>Chamaecyparis nootkatensis</i> 'Pendula' <i>Magnolia denudata</i>
2011	Sue Acheson	<i>Ilex opaca</i> 'Princeton Gold' (no record of original planting if different)
2012	Jeanette H. Dolan Kate Gutierrez Beverly Highfield	<i>Viburnum trilobum</i> 'Wentworth' <i>Prunus serrulata</i> 'Shogetsu' <i>Viburnum trilobum</i>
2013	Beth Branigan Jennifer Basile	<i>Hydrangea paniculata</i> 'Dvppinky' Pinky Winky <i>Hydrangea paniculata</i> 'Renhy' Vanille Fraise
2014	Antoinette 'Toni' Rinehart Marjorie Hulstrunk	<i>Prunus serrulata</i> var. <i>spontanea</i> <i>Prunus</i> × <i>yedoensis</i>
2015	Dorothy & Paul Hennessey Patricia Griffin	<i>Hamamelis</i> × <i>intermedia</i> 'Westerstede' <i>Viburnum nudum</i> 'Winterthur'
2016	Kay Deodene Karen Muccillo	<i>Lagerstroemia indica</i> 'Catawba'/ <i>Hamamelis</i> × <i>intermedia</i> 'Diane' <i>Hamamelis</i> × <i>intermedia</i> 'Jelena'
2017	Sue and Steve George Lesley Parness	<i>Amelanchier laevis</i> <i>Cornus kousa</i> 'Miss Satomi'
2018	Cynthia Triolo Ilona Ontscherenki	<i>Cornus</i> × <i>rutgersiensis</i> (Stellar Group) 'Rutban' Aurora® <i>Cornus</i> × <i>rutgersiensis</i> (Stellar Group) 'Rutcan' Constellation
2019	Judy Snow Russell Gatzke	<i>Parrotia persica</i> 'Vanessa' <i>Carpinus caroliniana</i> 'J.N. Globe' Ball o' Fire™

Recorded Zoom Cooking Demonstrations

Register for our virtual cooking demonstrations through the Friends website.

Cost: \$10 members / \$15 non-members



April: Lovely Leeks

Leeks are one of those vegetables we don't use often enough. They pair beautifully with a number of foods and are at their best this time of year. Take them on in this cooking demonstration with **Cynthia Triolo**, because once you know how to handle them you'll be using them regularly.

May: Brewed to Perfection

Tea is not just for drinking. Explore some unusual ways to cook with different types of tea like Earl Grey, oolong, and mint. Perfect for Mother's Day or any day really.

June: Ruby Red Rhubarb

Technically a vegetable, we've come to think of rhubarb as a fruit because of the way it's used in most kitchens. It became extremely popular in England in the 19th Century when a new variety named 'Victoria' was introduced as a commemorative of Queen Victoria's coronation in 1837. Learn how to use this versatile vegetable/fruit.



Here's a recipe celebrating grandmothers everywhere!

Crostata della Nonna

2 cups all purpose flour
1/2 cup sugar
1 teaspoon packed grated lemon peel
1/2 teaspoon (scant) salt
10 tablespoons cold butter, diced
2 large egg yolks
1 large egg
1 cup preserves, any kind you like
Powdered sugar

Preheat oven to 350°F. Blend flour, sugar, lemon peel and salt in processor for 10 seconds. Add butter and process until coarse meal forms. Add yolks and egg and process until moist clumps form. Transfer dough to work surface and knead 1 minute.

Divide dough into 2 pieces, one slightly larger than the other. Roll out the larger dough piece and line a 9 or 10-inch tart pan. Spread the preserves onto the crust. Roll out the remaining piece of dough into a rectangle. Cut 12 strips, 1/2 inch wide. Arrange 6 strips over preserves, spacing evenly; trim extra dough. Arrange remaining 6 strips on a diagonal, spacing evenly and forming a lattice pattern. Press ends to seal at crust edge.

Bake the tart until crust is golden brown, about 50 minutes. Let cool for about 10 minutes before removing the tart from the pan onto a serving platter. Once completely cool, lightly sift powdered sugar over tart, cut into wedges and serve.



Suburban Ecology: Easy Gardening Practices for a Healthy Planet – Virtual Zoom Program

Carolle Huber, local landscape architect, will discuss some easy practices that can help you make your landscape more eco-friendly. Not only will Carolle discuss the how, but also the why: from choosing plants in the spring to your fall cleanup. Learn how all of this affects your plants, your lawn, the birds, insects and more. Sustainable design is simply good design guided by solid environmental goals. We can all have landscapes that inspire awe, while still doing right by the environment. Carolle calls this "Suburban Ecology".

This program is eligible for 1.0 Rutgers Master Gardener CEU's.

Date: Thursday, April 15

Time: 7:00 pm

Cost: \$10 members / \$15 non-members

Plant Sale Preview Talks

Virtual Zoom Programs

Time: 7:00 pm

Cost: FREE, but registration is required

All talks are eligible for 1.0 Rutgers Master Gardener CEU's.

Deer Resistant Plants: How to Bamboozle Bambi and Enjoy Your Garden Again

The Plant Sale team, with decades of experience battling Bambi and other critters in their own gardens, will share their advice on plants that need minimal or no intervention to withstand the heavy deer browse pressure in northern New Jersey.

Thursday, March 4

Native Plants ARE BETTER: Born and Bred to Succeed in Your NJ Garden

The Plant Sale team will explore the breadth of beautiful ground covers, perennials, shrubs, and trees that will thrive in your garden, focusing on the key features of each and their best growing conditions.

Thursday, March 18

Fun and Funny Plants for Your Garden

April Fool's Day seems like the perfect time to talk about having some fun in the garden. The Plant Sale Team will share some odd-looking plants to consider planting. It could be their flower or fruit or growth habit. Time to shift attention from your fire pit and have some living focal points in your garden this year!

Thursday, April 1



Bantry House, Ireland



Cornwall and Devon

Armchair Travel

A Virtual Garden Tour of Ireland in May

In May of 2013, the Friends traveled to Ireland to visit some of the most beautiful gardens in the southern part of the emerald isle. Join **Judy Snow**, past president of the Friends, for a reprise of that memorable trip. Well-known public gardens like Powerscourt, Bantry House, and the National Botanical Gardens will be featured, along with lesser-known gems and a sample of private gardens. From castles and grand estates to cottages and ruins, and from towering rhododendrons and South American trees to Mediterranean succulents and petite rock garden specimens, we'll sample them all.

Date: Thursday, May 13 | *Time:* 7:00 pm | *Cost:* Free for members / \$10 non-members

Virtual Gardens of Cornwall and Devon in June

England is a "must see" destination for garden lovers, so the Friends set off again in June of 2017 for a visit to Cornwall and Devon. On this trip, **Judy Snow** relives an unforgettable tour through large estates such as Mount Edgcumbe, Lanhydrock, Heligan, and Trebah, as well as smaller private gardens. You'll learn about the rich history of the gardens while enjoying views of the lush borders in early summer.

Date: Thursday, June 3 | *Time:* 7:00 pm | *Cost:* Free for members / \$10 non-members



The Joy of Backyard Bird Feeding and Watching – Virtual Zoom Program

Jim Walker, owner of the Wild Birds Unlimited store in Denville, New Jersey, will provide our audience with the necessary information to make the hobby of bird feeding more enjoyable. Topics will include the best food to offer to attract the most variety of birds, the different types of feeders available, why water and nesting boxes are so important, as well as ways to thwart those pesky squirrels. Jim will also pay special attention to nesting, migrating birds and hummingbirds.

Date: Thursday, April 22

Time: 7:00 pm

Cost: \$10 members / \$15 non-members

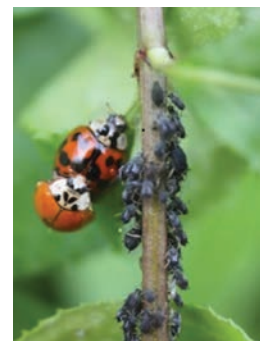
Good Bugs – Bad Bugs! Who's Who? Virtual Zoom Program

Figuring out who the beneficial insects are and who the pests are can be confusing. Join **Dr. Randi Eckel** of Toadshade Wildflower Farm in Frenchtown, NJ as she helps sort it out and discusses some management strategies that may help you strike the right balance.

Date: Thursday, June 24

Time: 7:00 pm

Cost: \$10 members / \$15 non-members



And there's more...

Check our website for previously recorded programs that are still available. There are four cooking demonstrations, the New Year's Party, Dablias and Composting.

affiliate member programs

Non-profit organizations whose missions focus on horticulture and the natural world are Affiliate members of the Friends of The Frelinghuysen Arboretum. Following are descriptions of groups who responded to our request for information to include in Arboretum Leaves. We do have other Affiliate Members, i.e., Bartlett Tree Experts, the Garden Club of Morristown and the North Jersey Dahlia Society who did not respond to our request. Take a moment to read about them and consider joining.

African Violet Club of Morris County

The African Violet Club of Morris County was started in the fall of 1994 and is an affiliate of the African Violet Society of America (AVSA). The purpose and goal of the group is to educate our members about the proper ways to grow African Violets successfully and to do the same for the public during our annual judged flower show. We support AVSA by encouraging membership and yearly donations. Contact info: Ginny Heatter, president, vaheatter@yahoo.com or Karyn Cichocki, secretary, kdc05@ptd.net

Frelinghuysen Arboretum Gesneriad Society

The Frelinghuysen Arboretum Gesneriad Society is a chapter of The Gesneriad Society. Our mission and goal is to educate not only our members but the public about the family of Gesneriads (family of plants that African Violets belong to), their cultural needs and propagation and to educate the public during our annual flower show. As a chapter of The Gesneriad Society, we support the society by promoting membership and making yearly donations, which promote Gesneriad research. Contact info: Ginny Heatter, president, vaheatter@yahoo.com or Jill Fischer, secretary, HFJG.Fischer@comcast.net

Great Swamp Bonsai Society

The Great Swamp Bonsai Society enjoys a membership ranging from beginners to artists of national and international renown, all dedicated to sharing our interest in, and enjoyment of, this fascinating art form. For more information, and to get our free newsletter, contact John Michalski at huonia@aol.com, or check out our Facebook Page (Great Swamp Bonsai Society).

Home Garden Club of Morristown

The Home Garden Club of Morristown, founded in 1925, welcomes members with all levels of gardening experience. We share interest in the advancement of horticulture, conservation and civic beauty in cooperation with the Garden Club of New Jersey. Meetings include lectures, hands-on workshops and trips to gardens. Some of our civic projects are planting urn displays at historic Acorn Hall, participating in horticultural therapy at Lyons Veterans Hospital and creating holiday wreaths for historic sites in Morristown. For more information contact Pam Venanzi at pdv51@optonline.net.

New Jersey Mycological Association

The New Jersey Mycological Association is a non-profit organization whose aims are to provide a means for sharing ideas, experiences, knowledge and common interests regarding fungi, and to furnish mycological information and educational materials to those who wish to increase their knowledge about mushrooms. We run forays throughout the state where experienced club members and newer members find and identify fungi found in the woods. Annual membership is \$10.00 for individuals and \$15.00 for families. The website is www.njmyco.org.

New Jersey State Chrysanthemum Society

The New Jersey State Chrysanthemum Society aims to stimulate, foster and increase interest and activity in the culture of chrysanthemums through educational lectures, instructional workshops, competitive shows and informal discussions among members, many of whom are expert growers. We welcome all who are interested in knowing and growing this quintessential queen of the fall: the chrysanthemum. Dues are \$25/year. For membership and/or more information, contact Karen Mastromano (973-992-6197; Kmastx@aol.com) or Cindy Hedin (908-655-6261; cphedinb@icloud.com)

North American Butterfly Association

The North American Butterfly Association (NABA) was created in 1992 by Jeffrey Glassman, who is the Association's President. The NABA was formed in order to promote awareness of butterfly conservation and the benefits of butterfly gardening, observation, photography and education. Garry Annibal is the President of the New Jersey Chapter of the NABA. Contact NABA at butterflyclubnj@gmail.com.

North American Rock Garden Society – Watnong Chapter

The core mission of the North American Rock Garden Society, of which the Watnong group forms a chapter, is the cultivation, conservation, and knowledge of rock garden plants, their value, habits and geographical distribution as well as interest in good garden design and the mutual exchange of experience and knowledge about gardening. However, the Watnong group also has programs about a variety of related topics, such as companion trees or native plants that mix well with rock gardens.

Dues are only \$10 per person or \$15 per couple; if you are interested in joining our group and activities, please contact the chair, Roxanne.hiltz@gmail.com.

affiliate member programs

Non-profit organizations whose missions focus on horticulture and the natural world are Affiliate members of the Friends of The Frelinghuysen Arboretum. Following are descriptions of groups who responded to our request for information to include in Arboretum Leaves. We do have other Affiliate Members, i.e., Bartlett Tree Experts, the Garden Club of Morristown and the North Jersey Dahlia Society who did not respond to our request. Take a moment to read about them and consider joining.

Northeast Judging Center of the American Orchid Society

The Northeast Judging Center of the American Orchid Society, a 501(c)(3), sponsors monthly judging events on the third Saturday of the month. We have educational forums and discussions on a wide range of topics related to orchid judging starting at 10:30 am, followed by judging. Anyone may bring an orchid for judging, or come to observe and learn. In addition to our monthly judging, we participate in orchid shows throughout the region, providing AOS judging as well as ribbon and trophy judging at the show. While the Haggerty Education Center is closed, we are meeting at the Parish House of the First Presbyterian Church, Hanover NJ. More information can be found on our Facebook page <https://www.facebook.com/AOSNortheastJudging>

TriState African Violet Council and the New Jersey Council of African Violet Judges

Tristate African Violet Council members are representatives from affiliated clubs in New Jersey, southern New York and eastern Pennsylvania as well as others interested in the propagation of African violets. Individual membership is \$10.00 for two years, June - May, and family membership is \$15.00 for two years, June - May. For further information email Janet Riemer at j_riemer@comcast.net, or call 609-737-1699.

Tri-State Hosta Society

The Tri-State Hosta Society was founded in 1993 by 3 hosta lovers in New Jersey and Long Island. Originally intended as a society of like-minded gardeners in the New York Metropolitan area, our membership now includes hostaphiles in several other states as well, including North Carolina, Pennsylvania, Maryland, to name a few. Our dues are \$20 for a two-year membership or \$25 for a three-year membership. Membership includes the three meetings, one or more open member gardens in the summer, an annual picnic, and a quarterly award-winning newsletter. We proudly sponsor and maintain a public hosta display garden at the Skylands Botanical Garden in Ringwood, NJ. Further information and photos of our activities can be found on our website, www.tristatehosta.org, or on our Facebook page. Our current President, Dave Chopko has an outstanding hosta garden in Boonton and is an active member of the American Hosta Society. He may be reached by email at daveroc2@aol.com. We are always delighted to welcome new members and our Membership Chair is Gene Tappan in West Milford. His email address is genetappan@hotmail.com and a membership application can be found on our website.

morris county park commission programs

For information and to register go to www.morrisparks.net or call 973.631.5396.

Art in Bloom:

Matilda Frelinghuysen's Garden

Join us for a magnificent art show of more than a dozen of Matilda Frelinghuysen's paintings accompanied by flower arrangement interpretations of her works of art. If you would like to participate as a flower arranger, call 973-326-7601 for more information.

Date: Sunday, June 13

Time: 9:00 am – 4:00 pm

Location: Frelinghuysen Arboretum Event Tent

Cost: \$10 per person

Virtual Plant of the Month Club for Kids: Strawberries

Ages 6-12

Meet with other plant lovers, get your hands dirty, plant a new kind of interesting, creepy, unusual or rare plant and learn how to take care of it. Learn all about everyone's favorite fruit – strawberries – and grow them in a container.

Date: Monday, May 10

Time: 4:00 pm – 4:45 pm

Cost: \$10 per person

Virtual Lunch and Learn:

Tips and Tricks of Patio Container Planting

Learn the secret of putting together a spectacular summer planter for your porch or patio.

Date: Thursday, May 20

Time: Noon – 12:45 pm

Cost: \$10 per person

Virtual Lunch and Learn:

Design Demystifying

Join Ann Fahey, Superintendent of Horticulture Education for a look at the elements of design and the various parts to consider when planning or re-doing your garden.

Date: Thursday, June 17

Time: Noon – 12:45 pm

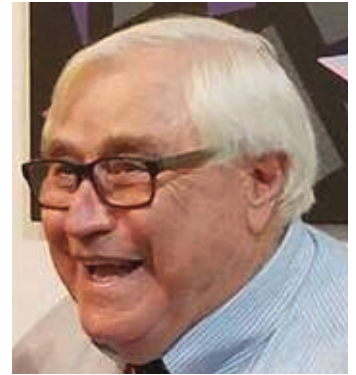
Cost: \$10 per person

in memoriam

Stephen John George

Stephen John George, 81, of Gladstone, NJ passed away peacefully after a brief illness. He was born and raised in Wharton, NJ, spent the majority of his life in Brookside, NJ where he and his wife, Susan raised their two sons. Both he and his wife were former Board members of the Friends. Steve was a U.S. Navy Veteran and served between 1957-1963. They started and ran Old Brookside Greenhouses & Nurseries for over 33 years. Steve served as president of NJ Farm Bureau from 1988 to 1994 and received the Arthur West Distinguished Service to NJ Farm Bureau award in 2018. Steve faithfully served on the board of the Farm Family Insurance Company for over two decades and served as Vice Chairman from 1999 to 2001. Upon retirement, he started his own consulting firm, Friendship Business Ventures, where he led an effort to make NJ-grown asparagus available in China.

Steve enjoyed traveling with his family, watching his grandchildren play sports, supporting their artistic endeavors, working for hours in the yard with Susan, and sharing his lifelong knowledge with others. He and Susan were great patrons of The Frelinghuysen Arboretum and hosted dozens of bus trips and lectures for members and Morris County residents as well as serving as Plant Experts at the annual Plant Sale. We extend our sincere condolences to Sue and family.



calendar of events

March

- 4 Deer Resistant Plants: How to Bamboozle Bambi and Enjoy Your Garden Again..... 5
- 18 Native Plants are Better: Born and Bred to Succeed in Your NJ Garden 5

April

- Ongoing* Cooking Demonstration: Lovely Leeks 4
- 1 Fun and Funny Plants for Your Garden..... 5
- 15 Suburban Ecology: Easy Gardening Practices for a Healthy Planet..... 4
- 22 The Joy of Backyard Bird Feeding and Watching..... 5
- 30 The Friends of The Frelinghuysen Arboretum's Annual Plant Sale Pick up 1

May

- Ongoing* Cooking Demonstration: Brewed To Perfection.... 4
- 1 The Friends of The Frelinghuysen Arboretum's Annual Plant Sale Pick up 1
- 10 Plant of the Month Club for Kids: Strawberries..... 7
- 13 A Garden Tour of Ireland in May..... 5
- 20 Lunch and Learn: Tips and Tricks of Patio Container Gardening 7

June

- Ongoing* Cooking Demonstration: Ruby Red Rhubarb 4
- 3 Gardens of Cornwall and Devon in June 5
- 13 Friends Members Only Annual Meeting 2
- 13 Art in Bloom..... 7
- 17 Lunch and Learn: Design Demystifying..... 7
- 24 Good Bugs – Bad Bugs! Who's Who? 5



Friends
of The Frelinghuysen Arboretum
353 East Hanover Avenue, P.O. Box 2267
Morristown, NJ 07962-2267

Arboretum Leaves is published quarterly by the Friends of The Frelinghuysen Arboretum. | 973-937-8803 | www.arboretumfriends.org

Heather Emelander, *President*
Lynn Shavelson, *Vice President*

Judith Snow, *Secretary*
Erin Rantas, *Acting Treasurer*

The Friends of The Frelinghuysen Arboretum and The Morris County Park Commission invite everyone to participate in their programs. If you require an interpreter for the deaf or other accommodations, please contact us at 973-937-8803 or TDD 1-800-852-7899. Please provide two weeks notice.

Registration Procedure

Please register online at www.arboretumfriends.org, or mail in the form below
with a check payable to:

Friends of The Frelinghuysen Arboretum,
P.O. Box 2267, Morristown, NJ 07962.

Email Lisa Bencivengo with any questions at lbencivengo@arboretumfriends.net.

registration form

Use this form to register for the Friends' sponsored programs shown below.

- Registrations for **Friends' sponsored programs** are accepted on a first-come, first-served basis and will be confirmed when payment is received.
- Credit cards are accepted at our website: arboretumfriends.org. Be sure to follow the Paypal instructions to complete the transaction. Bring your receipt to the program.
- Make checks payable to "Friends". Mail registration form and checks to: Friends, PO Box 2267, Morristown, NJ 07962
- In order to receive a refund, cancellations must be made at least 7 days in advance of the program. To cancel your registration, please send an email to cancellations@arboretumfriends.org. Please include your name, the name of the program and the number of spaces you are cancelling.
- For questions or more information, email lbencivengo@arboretumfriends.net.

Name _____

Address _____

City _____ State _____ Zip _____

Home phone _____

Secondary phone ☐ Work ☐ Cell ☐ Other _____

Email _____

Would you like an email confirmation? ☐ Yes ☐ No

No. attending	SPRING PROGRAMS	Cost
_____	Deer Resistant Plants: How to Bamboozle Bambi and Enjoy Your Garden Again	FREE
_____	Native Plants are Better: Bred to Succeed in Your NJ Garden	FREE
_____	Fun and Funny Plants for Your Garden	FREE
_____	Suburban Ecology: Easy Gardening Practices for a Healthy Planet	_____
_____	Members Only Annual Meeting	FREE
_____	Cooking Demonstration: Lovely Leeks	_____

No. attending	SPRING PROGRAMS	Cost
_____	Cooking Demonstration: Brewed to Perfection	_____
_____	Cooking Demonstration: Ruby Red Rhubarb	_____
_____	A Garden Tour of Ireland in May	_____
_____	Gardens of Cornwall and Devon in June	_____
_____	The Joy of Backyard Bird Feeding and Watching	_____
_____	Good Bugs – Bad Bugs! Who's Who?	_____

All programs are virtual, you will receive login instructions once you register.

membership form



Yes, I would like to join the Friends of The Frelinghuysen Arboretum.

Name _____

Address _____

City _____ State _____ Zip _____

Home phone _____

Secondary phone ☐ Work ☐ Cell ☐ Other _____

Email _____

- ☐ Individual Membership\$25
- ☐ Family Membership\$35
- ☐ Extended Family Membership\$45
- ☐ Associate Member\$50
- ☐ Supporting Member\$100
- ☐ Contributing Member\$250
- ☐ Patron\$500
- ☐ Student Membership\$15
must be 18+ and provide appropriate ID

Make checks payable to "Friends" and mail with membership form to: Friends, PO Box 2267, Morristown, NJ 07962

Please write a separate check for membership, and do not combine with program registration fees.

For more information about membership visit arboretumfriends.org



As a member of the Friends of The Frelinghuysen Arboretum you can enjoy discounts at our Retail Partners. Please show your Friends' membership card at time of purchase.

Retail Partners Program

arboretumfriends.org

ATLOCK FARM

545 Weston Canal Road, Somerset
732-356-3373 atlockfarm.com
10% discount all non-sale merchandise.

BACK TO NATURE HOME AND GARDEN

3055 Valley Road, Basking Ridge
908-350-7506 backtonature.net
10% discount all merchandise.

BARTLETT TREE EXPERTS

1-877-BARTLETT bartlett.com
15% discount tree feeding.

BLUE MOREL RESTAURANT & WINE BAR

THE WESTIN HOTEL

2 Whippany Road, Morristown
973-451-2619 bluemorel.com
10% discount all food purchases.

CONDURSOS GARDEN CENTER

96 River Road, Montville
973-263-8814 condursos.com
10% discount regular retail price on all green goods. Not to be combined with other offers. Offer does not include gift certificate purchases or delivery charges.

COUNTRY MILE GARDENS

1108 Mt. Kemble Avenue, Morristown
973-425-0088 countrymilegardens.com
10% discount all non-sale merchandise.

THE FARM AT GREEN VILLAGE

403 Green Village Road, Green Village
973-377-8703
TheFarmAtGreenVillage.com
10% discount all plant material.
Not to be combined with other offers.

HALL'S GARDEN CENTER & FLORIST

700 Springfield Avenue, Berkeley Heights
908-665-0331 hallsgarden.com
10% off anything with a root. Not to be combined with other offers & excludes fresh flowers.

J&M HOME & GARDEN

201 Main Street, Madison
973-377-4740 jmhg.com
10% discount all plant material.
Not to be combined with other offers.

FARMSIDE GARDENS & FLORIST

19 Loomis Avenue, Sussex
973-875-3160 farmsidegardens.com
10% discount all plant material.

METROPOLITAN FARM

119 Hickory Lane, Closter
201-767-0244 metropolitanfarm.com
10% off anything in store.
Not to be combined with other offers;
excludes fresh flowers.

METROPOLITAN PLANT EXCHANGE

471 Mt. Pleasant Avenue, West Orange
(locations also in Fort Lee and Paramus)
973-736-1997 metroplantexchange.com
10% off anything in store.
Not to be combined with other offers;
excludes fresh flowers.

MORRISTOWN AGWAY

176 Ridgedale Avenue, Morristown
973-538-3232 agway.com
10% discount plants & selected merchandise.

NJ DEER CONTROL

PO Box 8365, Red Bank
1-855-DEER GUYS NUDEERCONTROL.com
10% discount for any subsequent applications. Not to be combined with other offers. Free Trial application.

PLANT DETECTIVES

45 US Highway 206, Chester
908-879-6577 plantdetectives.com
15% discount. Not to be combined with loyalty club discount.

RARE FIND NURSERY

957 Patterson Road, Jackson
732-833-0613 rarefindnursery.com
10% of non-sale merchandise purchased will be donated to The Friends.

STEVEN KRISTOPH NURSERY

9 Roberts Road, Millstone Township
732-446-1440 pstevenkristoph.com
10% discount on Azaleas, Rhododendrons, Ornamental Trees, Shrubs & Perennials.

SUNNYSIDE GARDENS

35 Route 206, Stanhope
973-347-3010
sunnysidegardenandgifts.com
10% discount on plant purchase.
Not to be combined with other offers.

WELL-SWEEP HERB FARM

205 Mount Bethel Road, Port Murray
908-852-5390 wellssweep.com
10% off Tuesday-Thursday, May-September, excludes Special Event Days and sale items.

WILD BIRDS UNLIMITED®

Denville Commons Shopping Center
3130 Route 10 West, Denville
973 629-7636 www.wbu.com/denville
10% discount off all items

WILLIAMS NURSERY

524 Springfield Avenue, Westfield
908-232-4076 williamsnursery.com
10% discount on all non-sale merchandise.