

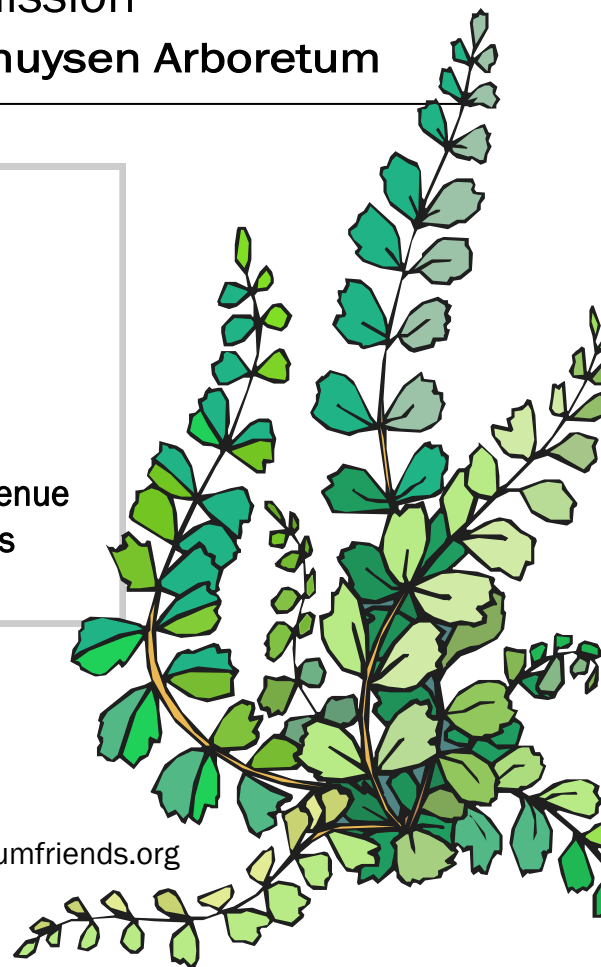


morris county park commission

A Get-to-Know-Us Stroll at The Frelinghuysen Arboretum

QUICK NOTES

- ⌘ Time of walk: about 30 minutes
- ⌘ Length: about a mile
- ⌘ Terrain: paved paths on mostly level ground
- ⌘ Trail Map: on reverse
- ⌘ Driving directions:
The Frelinghuysen Arboretum is at 353 East Hanover Avenue between Ridgedale Avenue and Whippany Road in Morris Township, directly across from the Morris County Library



Morris County residents can enjoy the legacy of Matilda E. Frelinghuysen at the arboretum named for her.

The park, a lovely 127 acre tract now surrounded by busy highways and office parks was once *Whippany Farm*. This estate was bequeathed to Morris County in 1969. Currently, the beautiful Colonial Revival mansion serves as headquarters for the Morris County Park Commission.

The Frelinghuysen Arboretum is a regional center for horticultural activities, including educational programs and garden and flower shows. For park strollers, The Frelinghuysen Arboretum offers gardens, open fields, woodland and groves of flowering trees that bring serenity to our harried lives.

Begin this “Get-to-Know-Us” stroll by exiting The Haggerty Education Center doors and walk up the driveway towards the mansion. The view from the portecochere with its expansive Great Lawn frequently used for picnics and concerts, is especially nice when the cherry trees at its far end are blooming in late April.

Walk past the mansion and through the Knot and Rose gardens. A fountain babbles in warm weather and the gazebo makes for a relaxing picnic spot. You can find additional seating at a crescent shaped “whispering” bench in the nearby Fern Garden or in our Shade Garden further along the paved path.

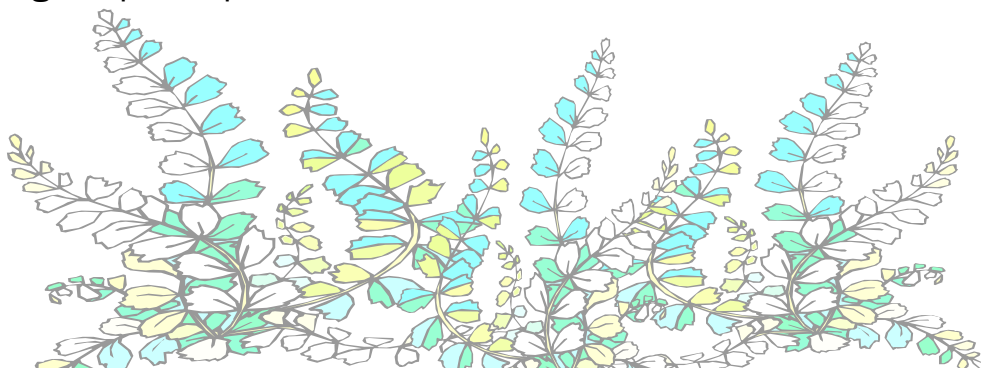
Come back out to the front of the mansion and carefully follow the road back up to the parking areas. Here you will find our Thematic Collections and award-winning Marsh Meadow Garden. For additional details, please refer to interpretive signage located throughout the gardens. The Belvedere makes an ideal place for bird watching.

Cross back towards The Haggerty Education Center. Here you will find the Waterwise Deck among our Home Demonstration Gardens. Visit the Barkman Vegetable Garden, the Watnong Rock Garden, the Vera Scherer Special Needs Garden, and the “Branching Out!” Garden.

We hope you enjoyed getting to know us. Please join us again when you have more time and can further enjoy all The Frelinghuysen Arboretum has to offer.

In the Haggerty Education Center you will find program listings for upcoming events and classes, trail maps and other informative literature as well as monthly gallery exhibits, restrooms and vending machines.

For more information or to find out how you can become a member or volunteer, please visit our website at arboretumfriends.org.



LIFT THIS PAGE UP
FOR OUR TRAIL MAP

