



fall 2022

Friends of The Frelinghuysen Arboretum

Frelinghuysen Arboretum Meadow Restoration Update

Meadows have always been a prominent feature of the landscape at The Frelinghuysen Arboretum. In recent years, these meadows were taken over by highly aggressive, non-native, invasive plant species including porcelain berry, wild chervil, mugwort, Japanese knotweed and mile-a-minute weed. The heavy presence of these species diminishes the aesthetic and ecological values of these meadow areas. Attempts were made to control invasive species through mechanical removal, prescribed burns, and herbicide spot treatments, but without success.

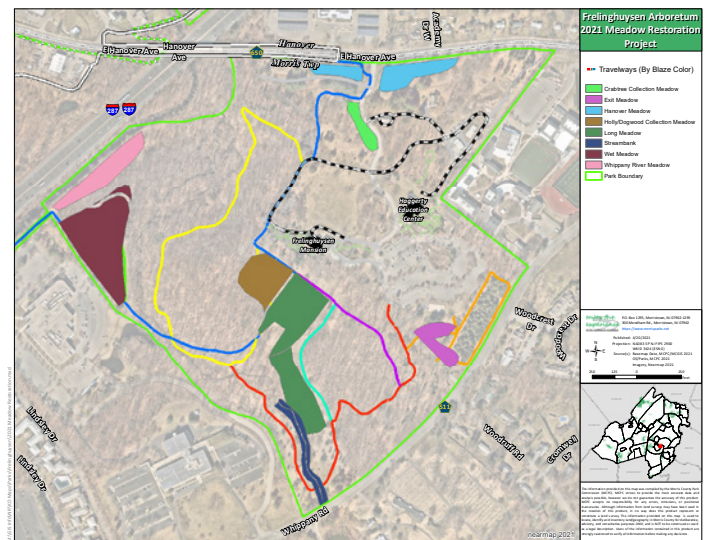
In 2021, aided by funding from a New Jersey Green Acres Local Government Stewardship Grant, the Morris County Park Commission embarked on a restoration project that includes 12 acres of meadow and 630 linear feet of streambank at The Frelinghuysen Arboretum.

This restoration will replace the existing invasive species with a diverse mix of native wildflowers and grasses.

A sub-component of the project is the restoration of a stretch of streambank that runs through the Conifer Collection area and is currently kept in a mown state to control the invasive Japanese knotweed and porcelain berry. Lack of an adequate streamside buffer increases the risk of erosion, has negative impacts on water quality and diminishes available habitat for wildlife and pollinators. The streambank restoration will replace the existing invasive species with a diverse mix of native shrubs, wildflowers, ferns, and sedges.

The Park Commission is working with reputable environmental firms on the design and installation of The Frelinghuysen Arboretum's meadow areas and streambank: Engineering & Land Planning Associates; Larry Weaner Landscape Associates; SumCo Eco-Contracting and Weeds Inc. These firms have completed many similar meadow restoration projects with great success.

The planting and seeding of native species throughout the meadows and along the streambank took place in the early summer of 2021 with periodic mowing throughout the summer and fall of 2021 to manage weeds and allow more tender seedlings to establish without being out-competed by the faster growing species in the seed mixes.



The completed native plant dominated meadow and streambank communities should drastically increase the ecological benefits of these areas by increasing the amount and variety of food resources and available habitat for native pollinators, birds, and wildlife. They will also be much more pleasing aesthetically providing colorful blooms throughout the growing season for visitors to enjoy.

Please be aware that these areas may appear unsightly for some time with the full results of the project not expected to be obvious until 2023. It will be worth the wait!

We thank the Park Commission's Kelli Kovacevic and Janice Karmon for providing the map and information regarding this exciting native reclamation of Frelinghuysen Arboretum's cultural landscape.



Streambank before and after restoration.

notes from the board

Dear Friends,

The Friends turn 50 this Fall!

A few years ago, Past President Sally Hemsén compiled a brief history of the Friends using our archives and, to a degree, her own memories. For those of you who haven't been part of our membership for all those years let me share some of the information Sally so beautifully put together for us.

The Morris County Park Commission (MCPC) dedicated the newly acquired Frelinghuysen Arboretum in May 1971. Gifted by Matilda E. Frelinghuysen, the historic mansion was intended for use as headquarters of the newly formed Park Commission, with the surrounding grounds open to the public for 'enjoyment and education'.

The next year, in response to much needed support by the MCPC, the Friends of The Frelinghuysen Arboretum (Friends) was formed. There were eight attendees at the first meeting on November 29, 1972. Among the first orders of business was the formation of a Program Committee, which planned six educational programs to be held the following spring. It was also decided that a newsletter should be published twice yearly (now quarterly), entitled *Arboretum Leaves*.

The Friends began donating monies to the MCPC in September 1973 with a grant of \$450 from their treasury toward the cost of a map of the Arboretum. This was the beginning of a long history of financial support for MCPC's three arboreta. The June 1974 issue of *Arboretum Leaves* noted that publicity from programs presented by the Friends resulted in increased visitation to the Arboretum. Garden clubs, school and scout groups, plant societies and

even visitors from abroad came to see and learn what this charming site had to offer.

As needs continued to grow so did the support given by the Friends. Grants were awarded for increased staffing, infrastructure of the Arboretum, enhancements to the Haggerty Education Center, trail development, greenhouse repair and maintenance, building of propagation units, fencing, and much, much more. Since that first donation the Friends provided more than one million dollars in financial support to The Frelinghuysen Arboretum, Willowood Arboretum, Bamboo Brook Outdoor Education Center, and the Tourne Park with the lion's share going toward the enrichment of The Frelinghuysen Arboretum.

Never ones to rest on our laurels (trustees and members provide countless volunteer hours yearly), the Friends spent pandemic time building virtual programming, implementing a new membership software program and, just recently, began managing a long-awaited website overhaul. We continue to bolster The Frelinghuysen Arboretum with fundraising events such as the Plant Sale and until recently Gingerbread Wonderland, while the Benjamin Blackburn Scholarship helps fund educational needs of students of horticulture at our local community college. New this year was June's Pollinator Day, a family friendly outdoor event. Our educational programming is stellar!

I look forward to what the future will bring for the Friends and I hope you continue to join me in supporting this organization that is 50 years young.

Yours in horticulture,

Heather Emelander,

with a grateful acknowledgment to Sally Hemsén

calendar of events

October

11	Happy, Healthy Houseplants	3
22	Designing Gardens with Peonies, a Luncheon Event.....	3
27	Diabolical Botany	3

November

1	Native Trees for Small Spaces	4
8	Conifers: What the Well-Dressed Garden is Wearing	4
15	Bonsai in Your Garden: Time to Try It.....	5
22	Figs: The Ideal Container Fruit Tree.....	5

December

13	Starting Seeds Indoors: When and How	3
10, 17, 24, and 27 – 31	Festival of Trees.....	6

Designing Gardens with Peonies, a Luncheon Event with Kathleen Gagan

An In-Person Event

At long last the Friends will be gathering in person to enjoy a buffet lunch together and hear from Kathleen Gagan on how to incorporate peonies in your garden design. This will be a special event after several years without in person programs, and Kathleen Gagan is the perfect person to kick it off.



Kathleen Gagan

This local resident is the founder and owner of Peony's Envy Nursery in Bernardsville, New Jersey. Kathleen has made a national name for herself as a peony diva and has appeared on the Martha Stewart Living Show, among many other venues. Her pictorial lecture will show you how to design with peonies (which are deer resistant), with an in-depth look at peony cultivar selection, siting, planting and care. Why talk about peonies now? Because fall is a good time to plant peonies! Kathleen will bring a selection of bare-root peonies for sale after the program.

The catered lunch will feature a delicious selection of salads, breads, fruit and yummy desserts plus some sparkling beverages. We hope you can join us for this festive event!

This program is eligible for 1.0 Rutgers Master Gardener CEU's.

Date: Saturday, October 22

Time: 12:00 Noon at the Haggerty Education Center

Cost: \$60 members / \$75 non-members

Diabolical Botany with Dorothy Smullen

Virtual Via Zoom

Join Dorothy Smullen in an exploration of the world of plants that are poisonous, thorny, smelly, insect eaters, irritating and illegal. A perfect program to watch a couple of days before Halloween!



Dorothy Smullen

Ms. Smullen is a retired high school science teacher, a teacher and naturalist at the New Jersey Audubon and past President of the New Jersey Mycological Association. She has been a nature and garden club speaker for 35 years and is a former board member of the Friends of Great Swamp National Wildlife Refuge.

This program is eligible for 1.0 Rutgers Master Gardener CEU's.

Date: Thursday, October 27

Time: 7:00 pm

Cost: \$10.00 members / \$15 non-members

Happy, Healthy Houseplants with Rutgers Master Gardener Linda Zenkert *Virtual Via Zoom*

If you would like to add the warmth and decorative quality of indoor plants to your home but you are too busy or don't have the information needed to take care of them, this presentation is for you. We will discuss the importance of choosing adaptable house plants and those that tolerate neglect. Plants that will forgive inconsistent watering and lack of proper lighting and yet, they will reward you with continued growth.

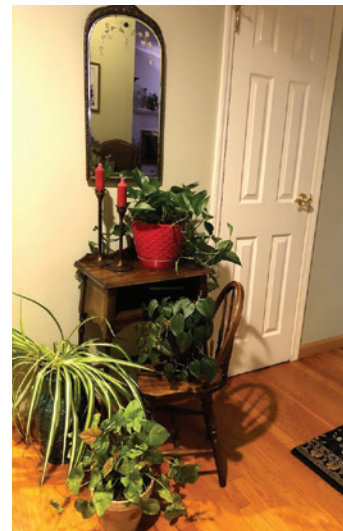
The presentation includes suggestions for using plants in small spaces, in low-light areas, and how to group plants to encourage growth and create attractive focal areas in a room.

*This program is eligible
for 1.0 Rutgers Master
Gardener CEU's.*

Date: Tuesday, October 11

Time: 7:00 pm

Cost: Free



Starting Seeds Indoors: When and How with Rutgers Master Gardener Grace Tshanakas *Virtual Via Zoom*

There is such joy and excitement watching as seedlings emerge and mature. The biggest excitement, of course, is from either harvesting a food you have grown or seeing a beautiful flower develop. In this presentation, you will learn everything you need to know about starting seeds indoors, including seed types, supplies needed, the planting process and caring for seedlings. Handouts will include a great list of resources as well as Rutgers Fact Sheets.

This program is eligible for 1.0 Rutgers Master Gardener CEU's.

Date: Tuesday, December 13

Time: 7:00 pm

Cost: Free



2022 Virtual Tree Symposium

Virtual via Zoom – Tuesdays in November



Native Trees for Small Spaces: Big Ecological Benefits in Small Sizes with Kim Eierman

Even with limited space you can still plant beautifully and ecologically with a wide array of small native trees. Learn which choices are most suitable for your region and provide important ecological services, including nectar, pollen, fruit, seeds, nuts and berries, cover and bird nesting sites. Get the information you need to source and correctly plant the best small native trees.



Kim Eierman

Kim Eierman is the founder of EcoBeneficial LLC. She is an environmental horticulturist and ecological landscape designer, specializing in native plants. Based in New York, Kim teaches at the New York Botanical Garden, Brooklyn Botanic Garden, The Native Plant Center, Rutgers Home Gardeners School and several other institutions. She is the author of the book, *The Pollinator Victory Garden: Win the War on Pollinator Decline with Ecological Gardening*.

Kim provides horticultural consulting and native landscape design to homeowners and commercial clients, including landscape architects and engineers. In addition to being a Certified Horticulturist through the American Society for Horticultural Science, Kim is an accredited Organic Landscape Professional, a Steering Committee member of The Native Plant Center, and a member of The Ecological Landscape Alliance and Garden Communicators International.

This program is eligible for 1.0 Rutgers Master Gardener CEU's.

Date: Tuesday, November 1

Time: 7:00 pm

Cost: \$10.00 members / \$15 non-members

This year our theme is *Great Trees for Small Spaces*. We'll hear about native trees, small conifers for containers, bonsai, and fig trees. There will be lots of ideas for your garden, large or small.

You may register for each program individually or sign up for all four programs and get one free. The discounted price for all four programs is \$30 for members and \$45 for non-members. Then sit back and enjoy all four programs via Zoom from the comfort of your home.

Conifers: What the Well-Dressed Garden is Wearing with Gerald Kral

Conifers can add an aesthetic to an ornamental garden impossible to achieve with other plants. This slide presentation is for folks wanting to create a garden that uses conifers and small trees for effect and structure rather than an exclusive display of specimens.

Exciting ways to display conifers, some still experimental, will be explored. How to choose the best conifer or small tree for such a purpose considering size, growth habit and form, adding bling to your conifer vignettes using selected companion plants, landscape rockeries, container rockeries and table rockeries will all be addressed in this lecture.

Gerald (Jerry) Kral attended Cornell University where he majored in Agricultural Science. He has been a dairy farmer, high school science teacher and founder with his wife of **Jerry and Karen's Gardens** in Rochester, New York, where they give regular garden tours. Jerry became a Master Gardener in 1996 and was on the originating committee of the very successful Gathering of Gardeners Symposia, which has featured such luminaries as Dan Hinckley, Tony Avent and Michael Dirr, all of whom have toured Jerry and Karen's Gardens. Jerry is an active member of the American Conifer Society (ACS), serving as a member of their Board of Directors for six years. In 2020 the ACS presented him with the Marvin and Emily Snyder Award for Dedicated Support.



Jerry Kral

Jerry's main passion continues to be his garden in Rochester, where he plays with rocks, conifers and companion plants and pushes the limits of what can be done!

This program is eligible for 1.0 Rutgers Master Gardener CEU's.

Date: Tuesday, November 8

Time: 7:00 pm

Cost: \$10.00 members / \$15 non-members

(Continued on page 5)

2022 Virtual Tree Symposium

Virtual via Zoom – Tuesdays in November

(Continued from page 4)



Bonsai in Your Garden: Time to Try It with John Michalski

Due to their tiny proportions, bonsai are ideal for the small garden, yet many people are daunted by the perceived difficulty and challenges of designing and keeping these container-grown trees alive and healthy. John Michalski will present the artistic and horticultural principles behind this ancient art form, and hopefully convince you that if you know how to tend a garden or prune a hedge, you can successfully grow, style and maintain bonsai in your own yard.

John Michalski is a public school science teacher who enjoys gardening and has been working with bonsai since 1988. He is currently President of the Great Swamp Bonsai Society, which is based in Morris County, New Jersey.

This program is eligible for 1.0 Rutgers Master Gardener CEU's.

Date: Tuesday, November 15

Time: 7:00 pm

Cost: \$10.00 members / \$15 non-members

Figs: The Ideal Container Fruit Tree with Mason Vollmer

In this presentation, appropriate for home gardeners, educators and professionals, you will learn how to successfully include figs in your Zone 6 garden, why figs can be a valuable component in environmental education programs and the care and propagation techniques for container figs. Mr. Vollmer will share his approach as to how Science informs the Craft which in turn inspires the Art of gardening. Even in the smallest spaces, you can cultivate trees that will grow your gardening skills and satisfaction. As an Arborist, Mr. Vollmer knows that “the right tree in the right place” includes education about Keystone and Native species, which the Fig is not, yet this talk will show how it can fit well into the science, craft and art of educational programs and backyard gardens, leading to a further environmental literacy so vital today.

Mason Vollmer is a horticultural educator with over 40 years experience gardening with people of all ages and abilities in schools and organizations with productive educational, therapeutic and socially beneficial outcomes in mind.

This program is eligible for 1.0 Rutgers Master Gardener CEU's.

Date: Tuesday, November 22

Time: 7:00 pm

Cost: \$10.00 members / \$15 non-members



Mason Vollmer





GINGERBREAD WONDERLAND

The Gingerbread Wonderland event is canceled this year with the hope that we will return to an in-person and well-attended platform in the Fall of 2023. The inability to create space between attendees, the many hours of staff time involved, and the need for volunteers, who are only being allowed on a limited basis, all contributed to our decision to postpone this event until next year.

Festival of Trees

Bring us your Gingerbread creations as ornaments this year!

In December the Friends will participate in the Festival of Trees hosted by the Morris County Park Commission in the Mansion at The Frelinghuysen Arboretum. As a nod to Gingerbread Wonderland which is canceled again this year, we will be decorating a tree with gingerbread ornaments. We welcome you to contribute a gingerbread creation! It can be as simple or as ornate as you desire but we will set a few guidelines for the sake of continuity.

Please contact Margery Ennist at mennist@arboretumfriends.net for information about where and when you can drop off your ornament and also for a how-to recipe to be sent to you along with size guidelines.

Tour The Frelinghuysen Arboretum's Mansion decorated for the holidays in the first annual Festival of Trees. Enjoy trees decorated by scouts, families, floral designers and garden clubs in this outing for the family.

Dates: Saturdays, December 10, 17 and 24 and
December 27 – 31 (Tuesday – Saturday)

Time: 10:00 am – 4:00 pm

Cost: \$10.00 per person, all ages – *pre-registration required*
by calling 973.326.7601.



Photo courtesy of The Kitchn

The 2022 Benjamin C. Blackburn Scholarship was awarded to Mallory Cibort of Mendham, NJ

Mallory will continue her studies at the County College (CCM) of Morris this fall as a sophomore with a major in Landscape Management and Design. Once her associate's degree at CCM is completed, she plans to enroll in the Landscape Architecture program at Rutgers University. She was on the Dean's Honor List for the Fall 2021 and Spring 2022 semesters.

Mallory has immersed herself in horticulture. When not in class she works at a local garden center educating herself in plant ID, lawn care, pruning and transplanting methods, and plant requirements. She is appreciative of how her job gave her valuable experience communicating with homeowners, a much-needed skill in the world of landscape architecture.

Congratulations Mallory!



Benjamin Blackburn



Celeriac and Apple Soup

For the soup:

- 1/4 cup (1/2 stick) butter
- 4 cups celeriac (celery root) peeled and cut into 1/2 inch chunks
- 2 medium Granny Smith apples, peeled, cored and cut into 1/2 inch chunks
- 1 large onion, chopped
- 4 cups chicken broth

For the chive oil:

- 1/2 cup chopped chives
- 1/2 cup grapeseed oil
- Pinch of salt

Melt the butter in a soup pot over medium heat. Add celeriac, apples, and onion. Cook until all are translucent but not brown, about 15 minutes. Add 4 cups broth. Cover and simmer until the celeriac and apples are soft. Stir occasionally and cook for about 30 minutes.

Working in batches, puree the soup in a blender (be careful if soup is hot) or by using an immersion blender until smooth, adding more broth if needed. Season to taste with salt and pepper.

Puree chives, grapeseed oil, and pinch of salt in a blender or food processor until smooth.

Rewarm the soup and serve with a drizzle of the chive oil.



*Friends
of The Frelinghuysen Arboretum*
353 East Hanover Avenue, P.O. Box 2267
Morristown, NJ 07962-2267

Arboretum Leaves is published quarterly by the Friends of The Frelinghuysen Arboretum. | 973-937-8803 | www.arboretumfriends.org

Heather Emelander, *President*
Lynn Shavelson, *Vice President*

Judith Snow, *Secretary*
Erin Rantas, *Treasurer*

The Friends of The Frelinghuysen Arboretum and The Morris County Park Commission invite everyone to participate in their programs. If you require an interpreter for the deaf or other accommodations, please contact us at 973-937-8803 or TDD 1-800-852-7899. Please provide two weeks notice.

Registration Procedure

Please register online at www.arboretumfriends.org, or mail in the form below with a check payable to:

Friends of The Frelinghuysen Arboretum,
P.O. Box 2267, Morristown, NJ 07962.

Email Lisa Bencivengo with any questions at lbencivengo@arboretumfriends.net.

registration form

- Registrations for **Friends' sponsored programs** are accepted on a first-come, first-served basis and will be confirmed when payment is received.
- Credit cards are accepted at our website: arboretumfriends.org. Be sure to follow the Paypal instructions to complete the transaction. Bring your receipt to the program.
- Make checks payable to "Friends". Mail registration form and checks to: Friends, PO Box 2267, Morristown, NJ 07962
- In order to receive a refund, cancellations must be made at least 7 days in advance of the program. To cancel your registration, please send an email to cancellations@arboretumfriends.org. Please include your name, the name of the program and the number of spaces you are cancelling.
- For questions or more information, email lbencivengo@arboretumfriends.net.

Use this form to register for the Friends' sponsored programs shown below.

Name _____

Address _____

City _____ State _____ Zip _____

Home phone _____

Secondary phone ☐ Work ☐ Cell ☐ Other _____

Email _____

Would you like an email confirmation? ☐ Yes ☐ No

No. attending

FALL PROGRAMS

Cost

_____	Happy Healthy Houseplants	FREE
_____	Designing Gardens with Peonies, a Luncheon Event	_____
_____	Diabolical Botany	_____
_____	Native Trees for Small Spaces: Big Ecological Benefits in Small Sizes	_____
_____	Conifers: What the Well-Dressed Garden is Wearing	_____
_____	Bonsai in Your Garden: Time to Try It	_____
_____	Figs: The Ideal Container Fruit Tree	_____
_____	Starting Seeds Indoors: When and How	FREE

You will receive login instructions for virtual programs once you register.

membership form



Yes, I would like to join the Friends of The Frelinghuysen Arboretum.

Name _____

Address _____

City _____ State _____ Zip _____

Home phone _____

Secondary phone ☐ Work ☐ Cell ☐ Other _____

Email _____

- ☐ Individual Membership\$25
- ☐ Family Membership\$35
- ☐ Extended Family Membership\$45
- ☐ Associate Member\$50
- ☐ Supporting Member\$100
- ☐ Contributing Member\$250
- ☐ Patron\$500
- ☐ Student Membership\$15
must be 18+ and provide appropriate ID

Make checks payable to "Friends" and mail with membership form to: Friends, PO Box 2267, Morristown, NJ 07962

Please write a separate check for membership, and do not combine with program registration fees.

For more information about membership visit arboretumfriends.org



As a member of The Friends of
The Frelinghuysen Arboretum you
can enjoy discounts at our Retail
Partners. Please show your Friends'
membership card at time of purchase.

Retail Partners Program

arboretumfriends.org

ATLOCK FARM

545 Weston Canal Road, Somerset
732-356-3373 atlockfarm.com
10% discount all non-sale merchandise.

BACK TO NATURE HOME AND GARDEN

3055 Valley Road, Basking Ridge
908-350-7506 backtonature.net
10% discount all merchandise.

BARTLETT TREE EXPERTS

1-877-BARTLETT bartlett.com
15% discount tree feeding.

BLUE MOREL RESTAURANT & WINE BAR

THE WESTIN HOTEL

2 Whippany Road, Morristown
973-451-2619 bluemorel.com
10% discount all food purchases.

CONDURSOS GARDEN CENTER

96 River Road, Montville
973-263-8814 condursos.com
10% discount regular retail price on all
green goods. Not to be combined
with other offers. Offer does not
include gift certificate purchases or
delivery charges.

COUNTRY MILE GARDENS

1108 Mt. Kemble Avenue, Morristown
973-425-0088 countrymilegardens.com
10% discount all non-sale merchandise.

THE FARM AT GREEN VILLAGE

403 Green Village Road, Green Village
973-377-8703
TheFarmAtGreenVillage.com
10% discount all plant material.
Not to be combined with other offers.

HALL'S GARDEN CENTER & FLORIST

700 Springfield Avenue, Berkeley Heights
908-665-0331 hallsgarden.com
10% off anything with a root. Not to be
combined with other offers & excludes
fresh flowers.

J&M HOME & GARDEN

201 Main Street, Madison
973-377-4740 jmhg.com
10% discount all plant material.
Not to be combined with other offers.

FARMSIDE GARDENS & FLORIST

19 Loomis Avenue, Sussex
973-875-3160 farmsidegardens.com
10% discount all plant material.

METROPOLITAN FARM

119 Hickory Lane, Closter
201-767-0244 metropolitanfarm.com
10% off anything in store.
Not to be combined with other offers;
excludes fresh flowers.

METROPOLITAN PLANT EXCHANGE

471 Mt. Pleasant Avenue, West Orange
(locations also in Fort Lee and Paramus)
973-736-1997 metroplantexchange.com
10% off anything in store.
Not to be combined with other offers;
excludes fresh flowers.

MORRISTOWN AGWAY

176 Ridgedale Avenue, Morristown
973-538-3232 agway.com
10% discount plants & selected
merchandise.

NJ DEER CONTROL

PO Box 8365, Red Bank
1-855-DEER GUYS NJDEERCONTROL.com
10% discount for any subsequent
applications. Not to be combined with
other offers. Free Trial application.

PLANT DETECTIVES

45 US Highway 206, Chester
908-879-6577 plantdetectives.com
15% discount. Not to be combined with
loyalty club discount.

RARE FIND NURSERY

957 Patterson Road, Jackson
732-833-0613 rarefindnursery.com
10% of non-sale merchandise purchased
will be donated to The Friends.

STEVEN KRISTOPH NURSERY

9 Roberts Road, Millstone Township
732-446-1440 pstevenkristoph.com
10% discount on Azaleas,
Rhododendrons, Ornamental Trees,
Shrubs & Perennials.

SUNNYSIDE GARDENS

35 Route 206, Stanhope
973-347-3010
sunnysidegardenandgifts.com
10% discount on plant purchase.
Not to be combined with other offers.

WELL-SWEEP HERB FARM

205 Mount Bethel Road, Port Murray
908-852-5390 wellssweep.com
10% off Tuesday-Thursday, May-
September, excludes Special Event
Days and sale items.

WILD BIRDS UNLIMITED®

Denville Commons Shopping Center
3130 Route 10 West, Denville
973 629-7636 www.wbu.com/denville
10% discount off all items